



# Rubber Combo Conveyor Belt

/ Collaborate / Create / Convey

FLUENT CONVEYORS, LLC / [WWW.FLUENTCONVEYORS.COM](http://WWW.FLUENTCONVEYORS.COM)



(866)764-2980 / [SALES@FLUENTCONVEYORS.COM](mailto:SALES@FLUENTCONVEYORS.COM) / ©COPYRIGHT



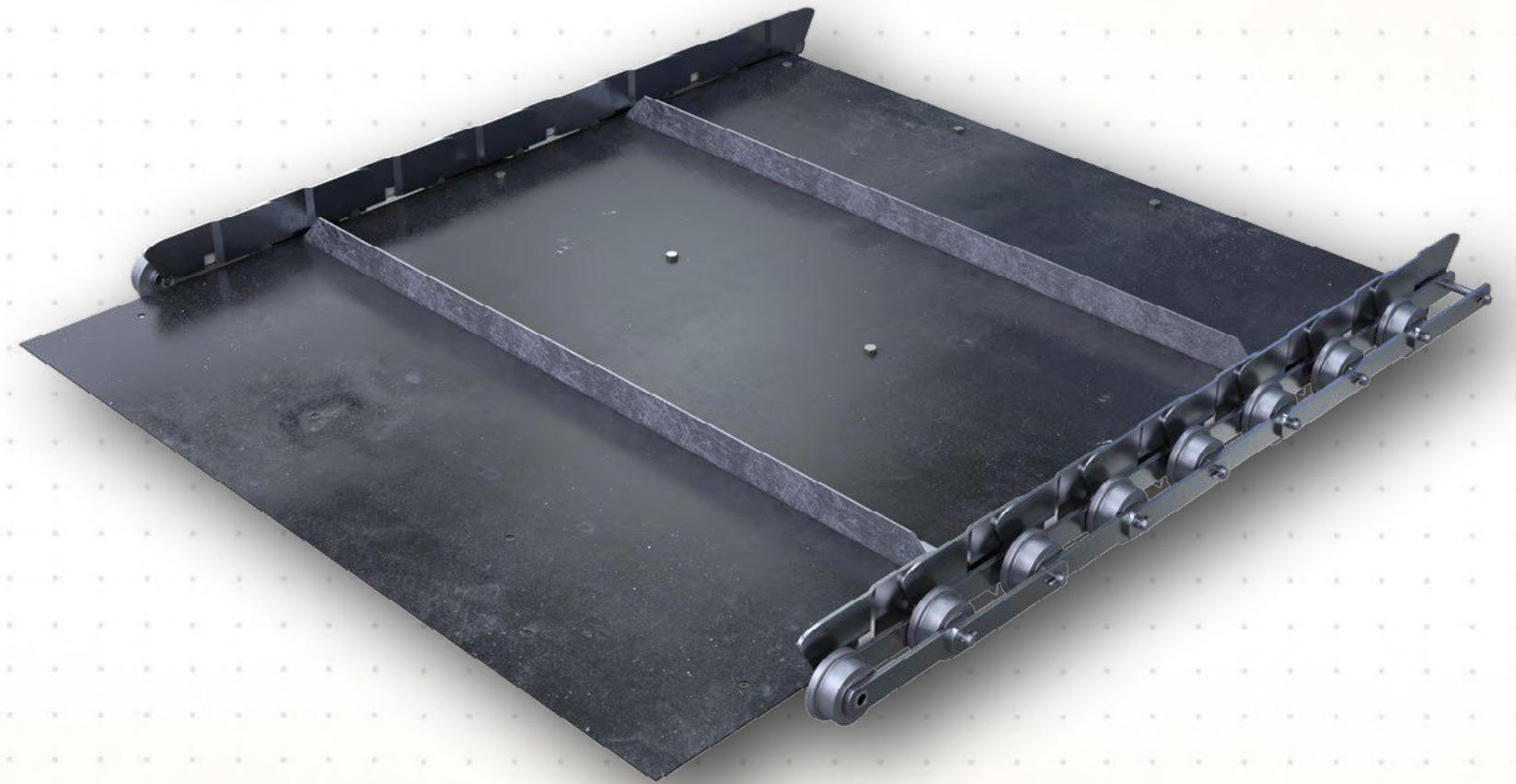


## Copyright

The Document and its content is copyright of Fluent Conveyors LLC – © Fluent Conveyors LLC. All rights reserved. Any redistribution or reproduction of part or all of the contents in any form is prohibited other than the following:

- You may print or download to a local hard disk extracts for your personal and non-commercial use only
- You may copy the content to individual third parties for their personal use, but only if you acknowledge Fluent Conveyors LLC as the source of the material.

You may not, except with our express written permission, distribute or commercially exploit the content. Nor may transmit it or store it in any form of electronic retrieval system.



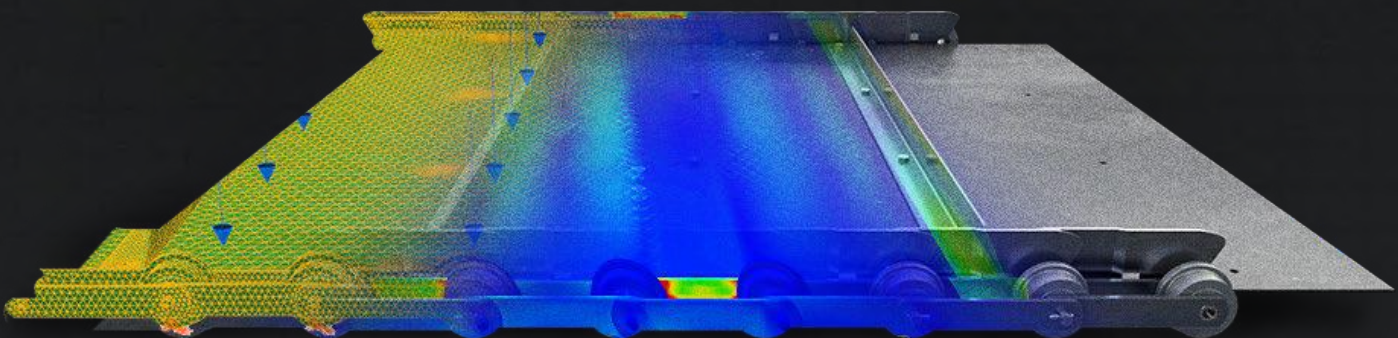


# Rubber Combo Replacement Conveyor Belts

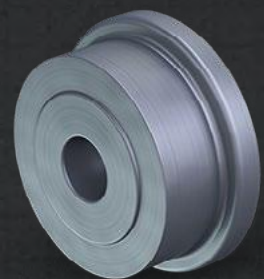
/ Collaborate / Create / Convey

Fluent Rubber Combination conveyor belts are as heavy-duty as they come. These C-channel reinforced belts are the perfect mid-weight applications for processing cardboard, paper, old newspaper, plastics, shredded paper, and more.

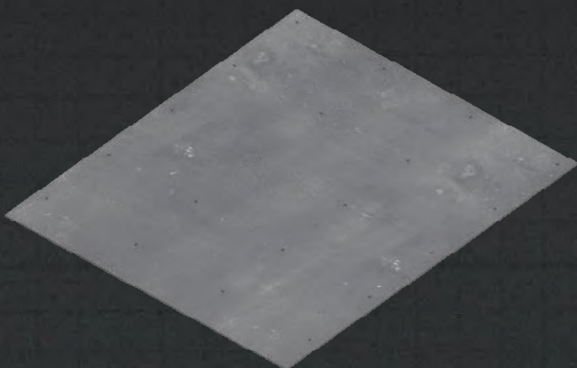
Rubber combo belts come in 6-inch, and 9-inch pitch options up to 84" wide (optional larger). 2 Ply 220# and 3 Ply 330# belting, precision die punched wings, single flanged and sintered steel rollers, solid locking pins C-channel backing and add-on options such as cleats, upgraded chain, larger rollers and more. These belts deliver smooth operations time and time again.



## Solutions / Replacement Belt Parts



Hardened Sintered Rollers



2 Ply 220# or 3 Ply 330# Rubber Segments



Heavy Duty C-Channel



C1045 Precision Chain



Assembled Rubber Combo Segments



# Key Features

C-CHANNEL REINFORCEMENT

INTERLOCKING SIDE WINGS

COTTER PINS

DOUBLE ROW SIDE BARS

CUSTOM ANGLE CLEATS

SOLID MACHINED BUSHINGS

HEAVY DUTY RUBBER 22-330

HEAVY DUTY IMPACT PADS

HARDENED SINTERED STEEL ROLLERS

HEADED STUB PINS



## C-Channel Reinforcement

C 3" x 5# up C 6" x 8.2# heavy duty channel every other pitch



## Interlocking Side Wings

2- 1/2". 3" & 4" high precision die formed interlocking off set wing 1/8" - 1/4" thick wing fully mig welded to the chain bar to prevent scrap build up.



## Cotter Pins

Easy maintenance of chain and to secure the rods to the rollers.  
Solid locking pins available



## Double Row Side Bars

Standard 2" x 1/4" thick C1045 precision die-punched sidebar.  
Additions include 2" x 3/8" thick and 2.5" x 1/2" thick. 1.125" wide x 3/16" thick on the smaller pitches



# Key Features

C-CHANEL REINFORCEMENT

INTERLOCKING SIDE WINGS

COTTER PINS

DOUBLE ROW SIDE BARS

CUSOTOM ANGLE CLEATS

SOLID MACHINED BUSHINGS

HEAVY DUTY RUBBER 220-330

HEAVY DUTY IMPACT PADS

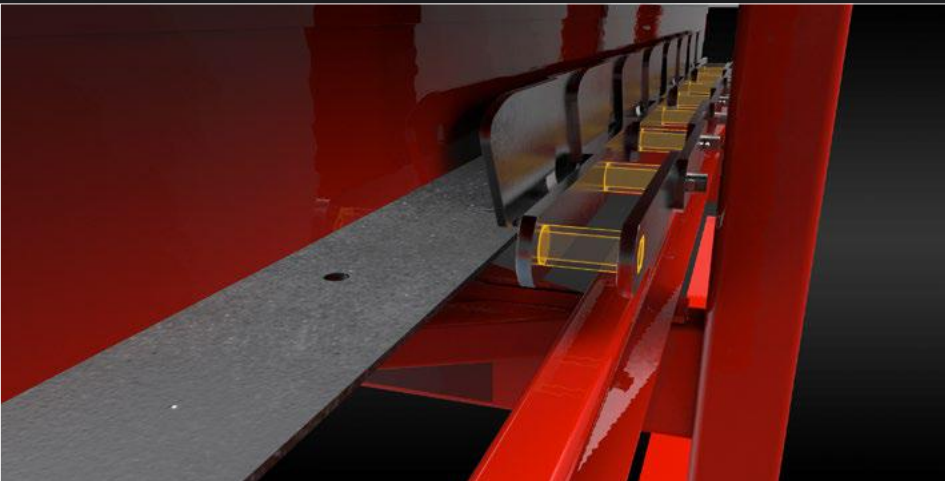
HARDENED SINTERED STEEL ROLLERS

HEADED STUB PINS



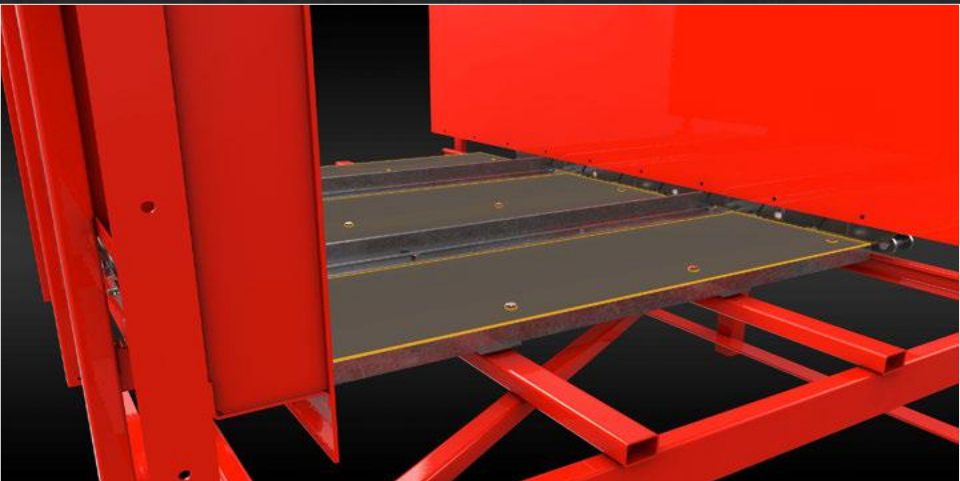
## Customs Angle Cleats

1/4" or 3/8" thick angle cleats in 2", 3" or 4" high options



## Solid Machined Bushings

.50 - 1.0 ID x .69-1.38 OD Long 1018 solid, machined bushing. Carburized, hardened RC55-60, press fit into inner side bars.



## Heavy Duty Rubber 220- 330

Fluent Conveyors 2 ply 220 up to 3 ply 330. Custom options available upon request. Max width without longitudinal splice is 84" wide.



## Heavy Duty Impact Pads

Custom number of rows, 1/4", 3/8", 1/2" and 1" thick plate impact shoes every other pitch



Key Features

C-CHANNEL REINFORCEMENT

INTERLOCKING SIDE WINGS

COTTER PINS

DOUBLE ROW SIDE BARS

CUSOTOM ANGLE CLEATS

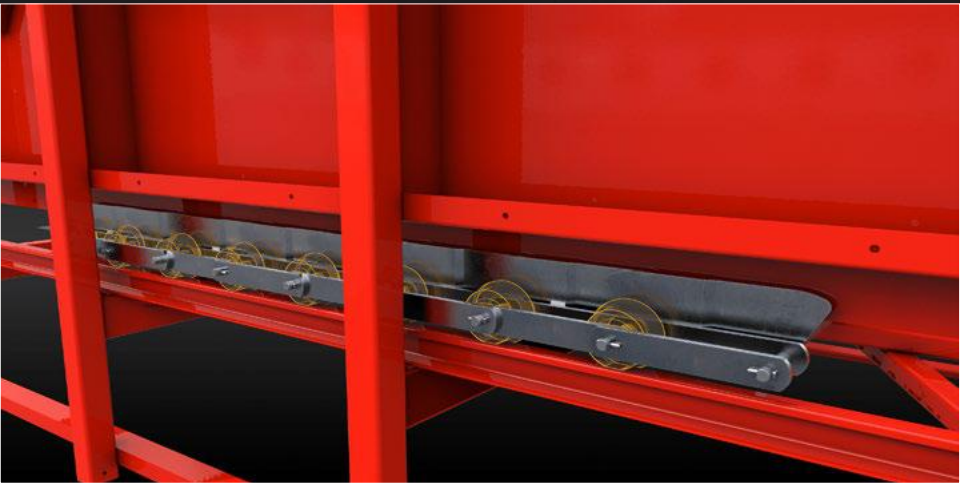
SOLID MACHINED BUSHINGS

HEAVY DUTY RUBBER 22-330

HEAVY DUTY IMPACT PADS

HARDENED SINTERED STEEL ROLLERS

HEADED STUB PINS



## Hardened Sintered Steel Rollers

Flanged and hardened steel rollers in 1 ¾", 2-1/16", 3", 3 ½", 4" and 5" diameter options.



## Headed Stub Pins

4142 precision headed machined and heat-treated alloy pin. See options pages for all options. ¾" diameter up to 1" diameter pins to connect chain.



# The Fluent Conveyor Product Family

/ Collaborate / Create / Convey



Roller Chain



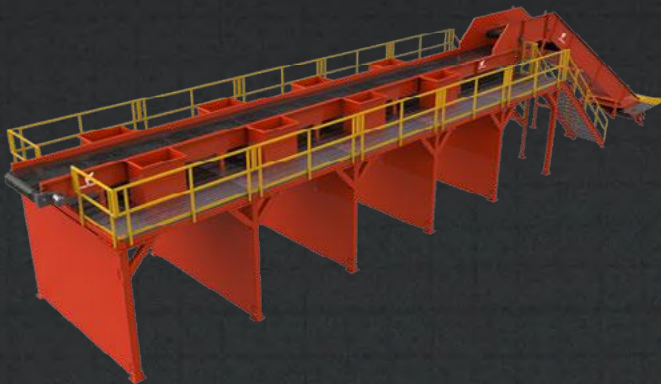
Light Duty Roller Chain  
Conveyors



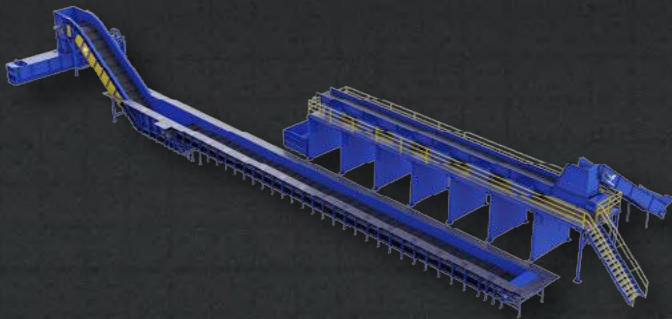
Trough Idler Conveyors



Slider Bed Conveyors



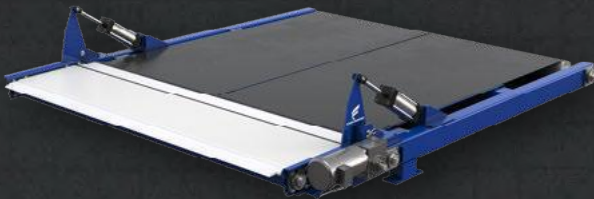
Standard Sort Systems



Custom Sort Systems



Package Handling  
Conveyors



Custom Conveyors



# Technical Specifications & Belt Modification Options

Please note not all belts can be configured with each option.

Width Options	<div><div>• 12"</div><div>• 36"</div></div> <div><div>• 24"</div><div>• 48"</div></div> <div><div>• 60"</div><div>• 84"</div></div> <div><div>• 72"</div></div> <div><div>• 108" (with longitudinal splice) and custom widths from 12" up to 120" width with all increments within that range. We can go up to 120" width with a longitudinal splice, otherwise 84" wide is max.</div></div>
Cleat Options	<div><div>• 1.5"</div><div>• 2"</div></div> <div><div>• 3"</div><div>• 4"</div></div> <div><div>• ¼" – 3/8" thick angle.</div><div>• Custom options available per required specifications.</div></div>
Pitch Options	<div><div>• 4 inch</div></div> <div><div>• 6 Inch.</div></div> <div><div>• 9 Inch.</div></div>
Rubber Thickness	<div><div>• 2 Ply 220 up to 3 Ply 330</div></div>
Side Wing Height	<div><div>• 2-1/2"</div><div>• 3"</div></div> <div><div>• 4"</div></div>
Chain Pull	<div><div>• 4,000#</div><div>• 6,000#</div></div> <div><div>• 9,000#</div><div>• 13,000#</div></div> <div><div>• 9,000#</div><div>• 25,000#</div></div>
Side Bar Thickness	<div><div>• 3/16"</div><div>• 1/4"</div></div> <div><div>• 3/8"</div><div>• 1/2"</div></div>
Hardened Bushing Sizes	<div><div>•.50 up to 1.0 inside diameter x .69-1.38 outside diameter</div></div>
Pin Diameter Options	<div><div>• 1/2"</div></div> <div><div>• ¾</div><div>• 1"</div></div>
Roller Diameter Options	<div><div>• 1 ¾"</div><div>• 2 1/16"</div></div> <div><div>• 3</div><div>• 3 ½"</div></div> <div><div>• 4"</div><div>• 5"</div></div>
Custom Modifications	<div><div>No wings, longitudinal splice, optional 4 ply 440 thickness.</div></div>



# Replacement Rubber Combination Roller Chain Conveyor Belt

## Step A: belt specs (see page 12)

1	Rubber Thickness - 2-PLY OR 3-PLY IF KNOWN	inches	mm
2	Belt Width (Inside Sealing Wings)	inches	mm
3	Belt Width (Overall Width)	inches	mm
4	Roller Spacing	inches	mm
5	Belt Length	inches	mm

## Step B: roller specs (see page 13)

6	Roller Diameter	inches	mm
7	Flange Roller Diameter (if Applicable)	inches	mm
8	Roller Width	inches	mm
9	Overall Roller Width (Includes Flanged Roller)	inches	mm

## Step C: side bar specs (see page 14)

10	Chain Pitch	inches	mm
12	Side Bar Width	inches	mm
13	Side Bar Thickness	inches	mm
14	Single Or Double Row	inches	mm

## Step D: sealing wings specs (see page 15)

15	Sealing Wing Height	inches	mm
16	Sealing Wing Thickness	inches	mm



Step E: cleat specs (see page 16)

1	Height Of Cleat (Angle Iron Shown)	inches	mm
2	Thickness Of Cleat	inches	mm
3	Total Length	inches	mm
4	Offset From Sealing Wing	inches	mm

Step F: underside support specs (see page 17)

6	Support Type / Size (C-Channel Shown)	inches	mm
7	Support Spacing (Every Other Pitch Shown)	inches	mm
8	Support Length	inches	mm

Step G: belt underside wear pads specs (see page 18)

1	Wear Pad Thickness	inches	mm
2	Wear Pad Quantity ( Two Per Pitch Shown)	inches	mm
3	Wear Pad Spacing	inches	mm
4	Wear Pad Location	inches	mm
5	Wear Pad Size	inches	mm



# COMBO BELT COMPONENT OVERVIEW

## STEP D

### SEALING WINGS SPECS NEEDED (IF APPLICABLE):

- 14: SEALING WING HEIGHT
- 15: SEALING WING THICKNESS

## STEP E

### CLEAT SPECS NEEDED (IF APPLICABLE):

- 16: HEIGHT OF CLEAT (ANGLE IRON SHOWN)
- 17: THICKNESS OF CLEAT
- 18: TOTAL LENGTH
- 19: OFFSET FROM SEALING WING

## STEP A

### BELT SPECIFICATIONS

- 1: RUBBER THICKNESS -2-PLY OR 3-PLY IF KNOWN
- 2: BELT WIDTH (INSIDE SEALING WINGS OR SIDE BARS)
- 3: BELT WIDTH (OVERALL WIDTH)
- 4: ROLLER SPACING
- 5: BELT LENGTH

## STEP B

### ROLLER SPECS NEEDED

- 6: ROLLER DIAMETER
- 7: FLANGED ROLLER DIAMETER (IF APPLICABLE)
- 8: ROLLER WIDTH
- 9: OVERALL ROLLER WIDTH (INCLUDES FLANGED ROLLER)

## STEP C

### SIDE BARS SPECS NEEDED:

- 10: CHAIN PITCH
- 11: SIDE BAR WIDTH
- 12: SIDE BAR THICKNESS
- 13: SINGLE OR DOUBLE ROW

## STEP F

### BELT UNDERSIDE SUPPORT SPECS NEEDED:

- 20: SUPPORT TYPE / SIZE (C-CHANNEL SHOWN)
- 21: SUPPORT SPACING (EVERY OTHER PITCH SHOWN)
- 22: SUPPORT LENGTH

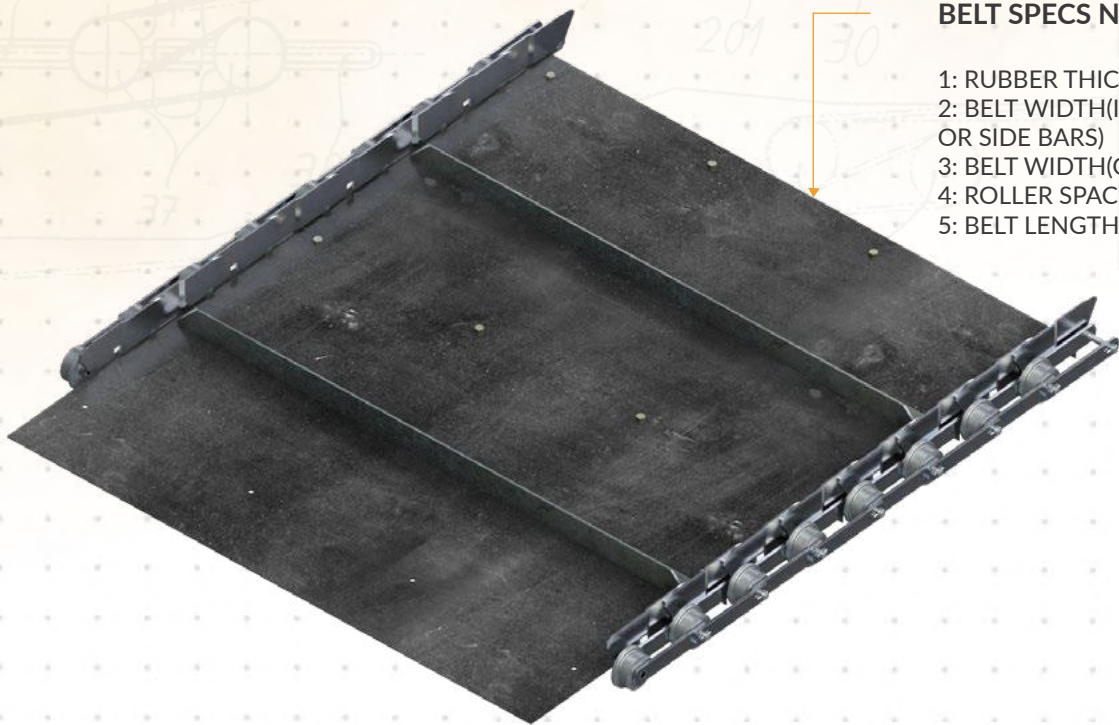
## STEP G

### BELT UNDERSIDE WEAR PADS SPECS NEEDED (IF APPLICABLE):

- 23: WEAR PAD THICKNESS
- 24: WEAR PAD QUANTITY (TWO PER PITCH SHOWN)
- 25: WEAR PAD SPACING
- 26: WEAR PAD LOCATION
- 27: WEAR PAD SIZE

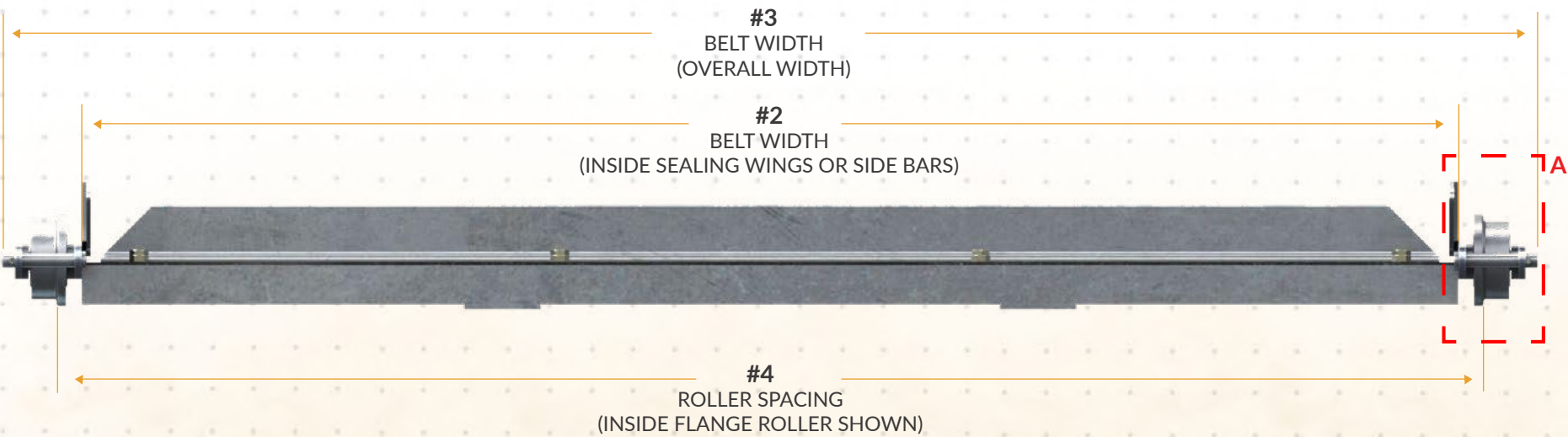
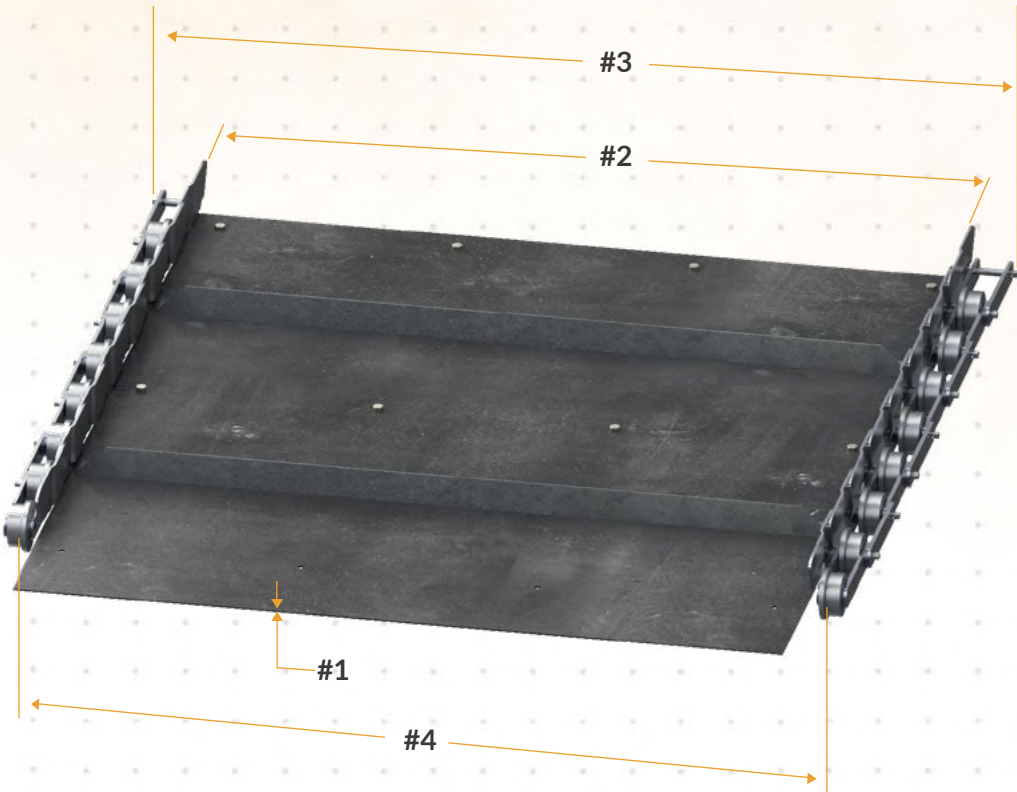


# STEP A: BELT SPECS

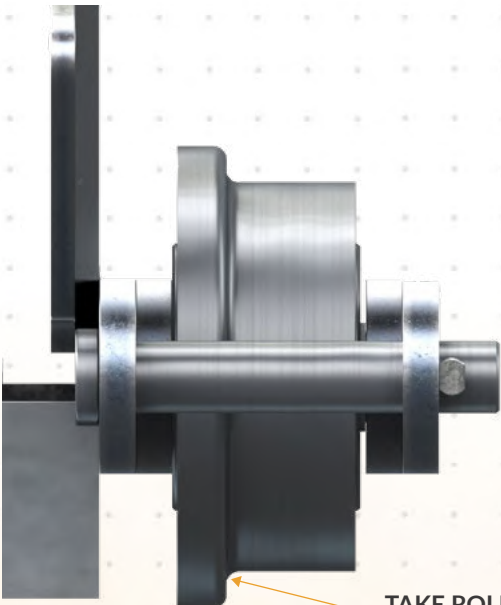


## BELT SPECS NEEDED:

- 1: RUBBER THICKNESS -2-PLY OR 3-PLY IF KNOWN
- 2: BELT WIDTH(INSIDE SEALING WINGS OR SIDE BARS)
- 3: BELT WIDTH(OVERALL WIDTH)
- 4: ROLLER SPACING
- 5: BELT LENGTH



#1  
RUBBER BELT  
THICKNESS  
(2-PLY OR  
3-PLY  
IF KNOWN)

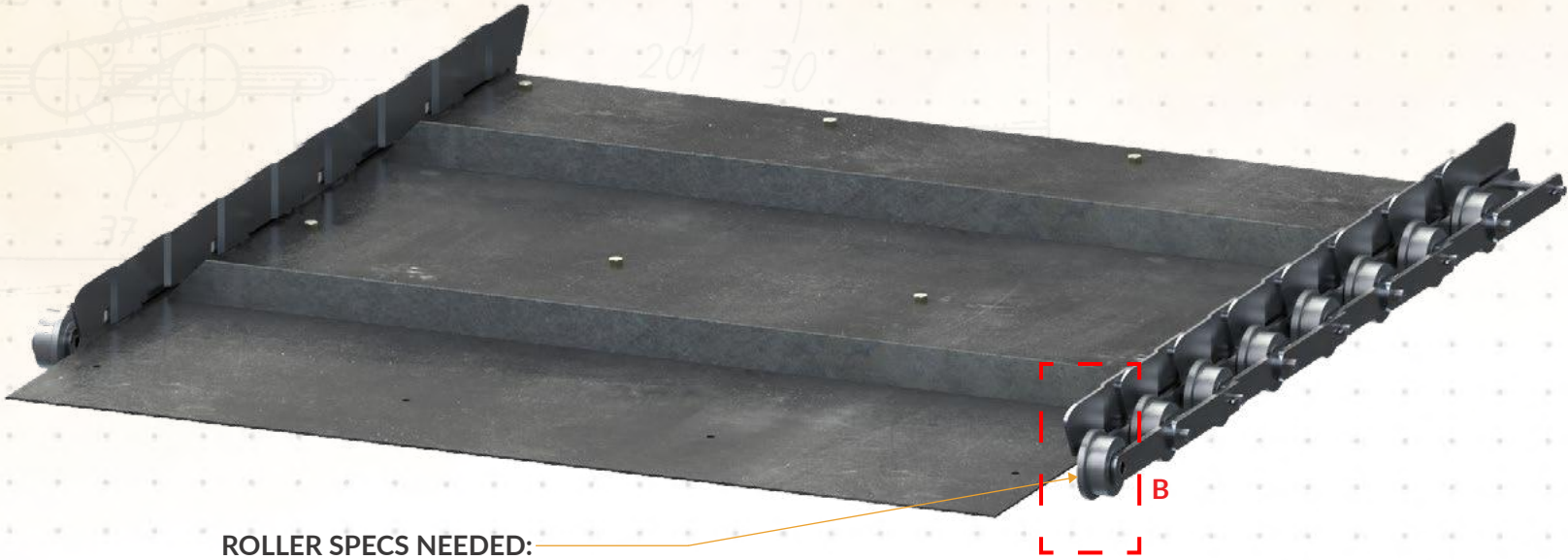


DETAIL A  
SCALE 1 : 2

TAKE ROLLER SPACING  
MEASUREMENT AT THIS POINT  
(WHERE FLAT PORTION OF  
ROLLER STARTS)



# STEP B: ROLLER SPECS

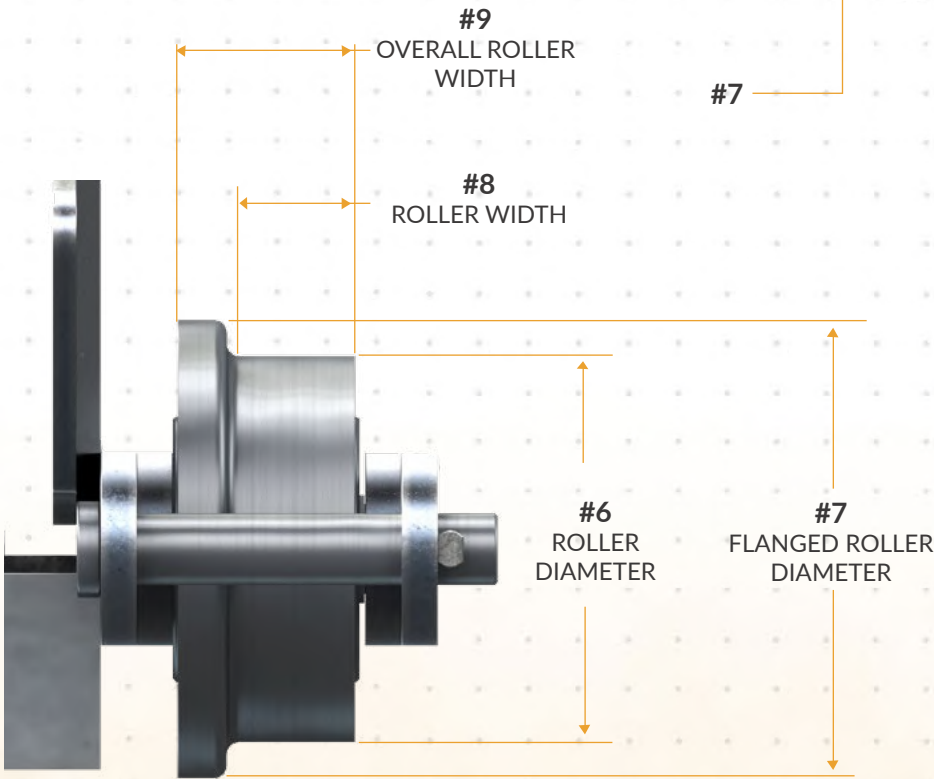
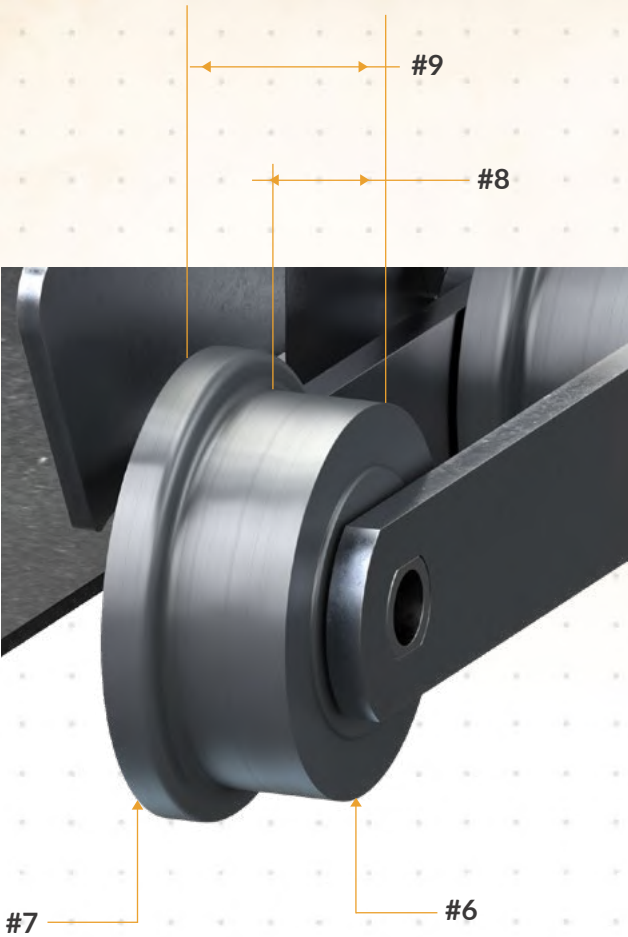


ROLLER SPECS NEEDED:

- 6: ROLLER DIAMETER
- 7: FLANGED ROLLER DIAMETER (IF APPLICABLE)
- 8: ROLLER WIDTH
- 9: OVERALL ROLLER WIDTH (INCLUDES FLANGED ROLLER)



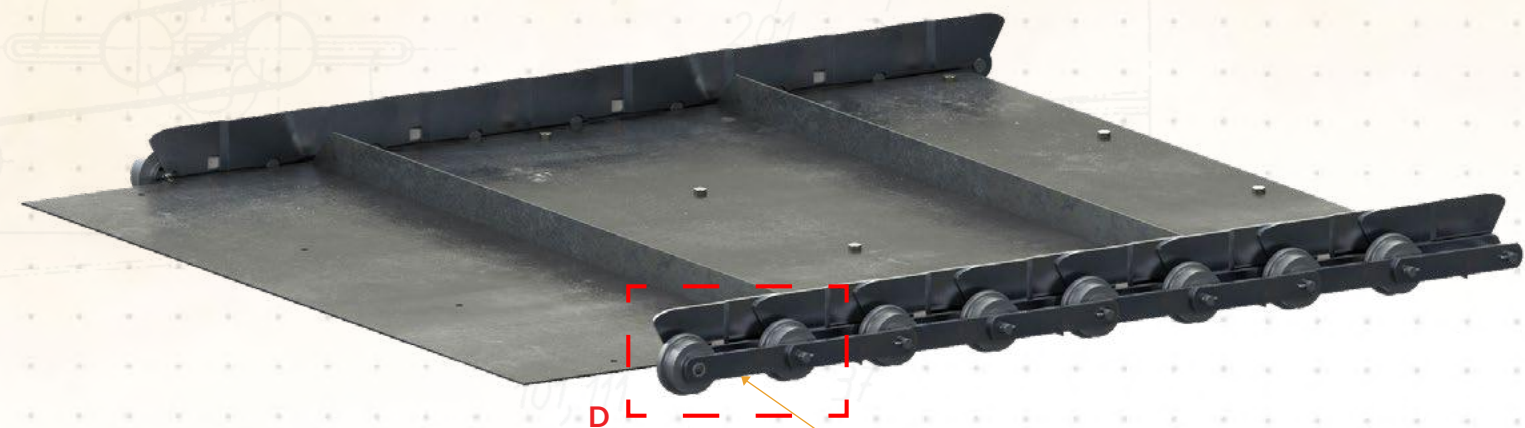
DETAIL B  
SCALE 1 : 2



DETAIL C  
SCALE 1 : 2

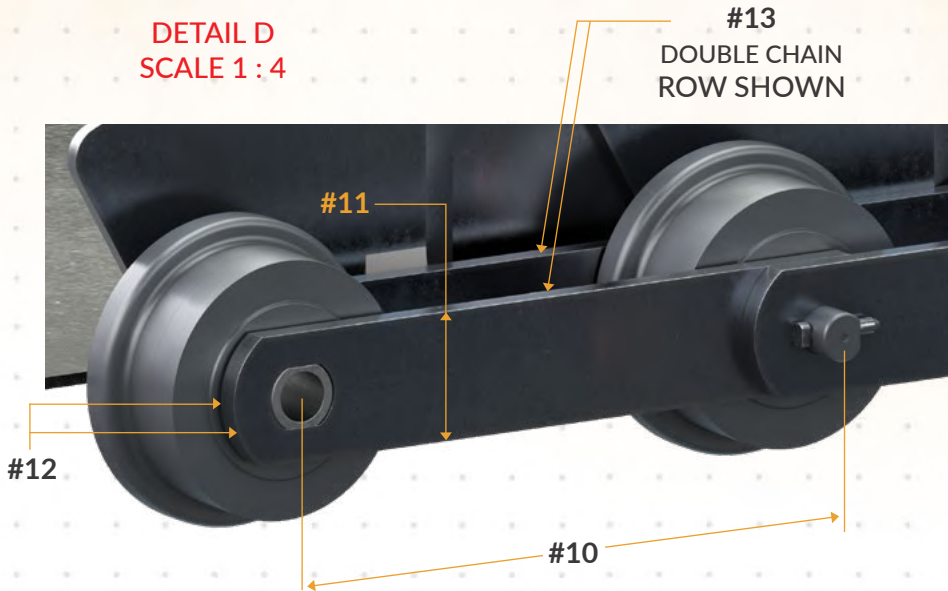


# STEP C: SIDE BAR SPEC



SIDE BARS SPECS NEEDED:

- 10: CHAIN PITCH
- 11: SIDE BAR WIDTH
- 12: SIDE BAR THICKNESS
- 13: SINGLE OR DOUBLE CHAIN ROW

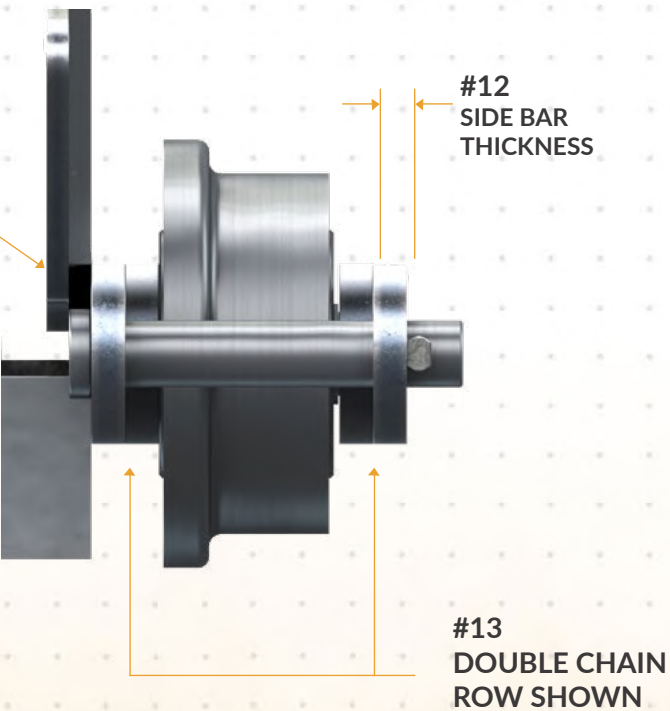


#11  
SIDE BAR  
WIDTH

#10  
CHAIN PITCH

\*SEALING WINGS  
ARE NOT COUNTED AS  
DOUBLE CHAIN ROW

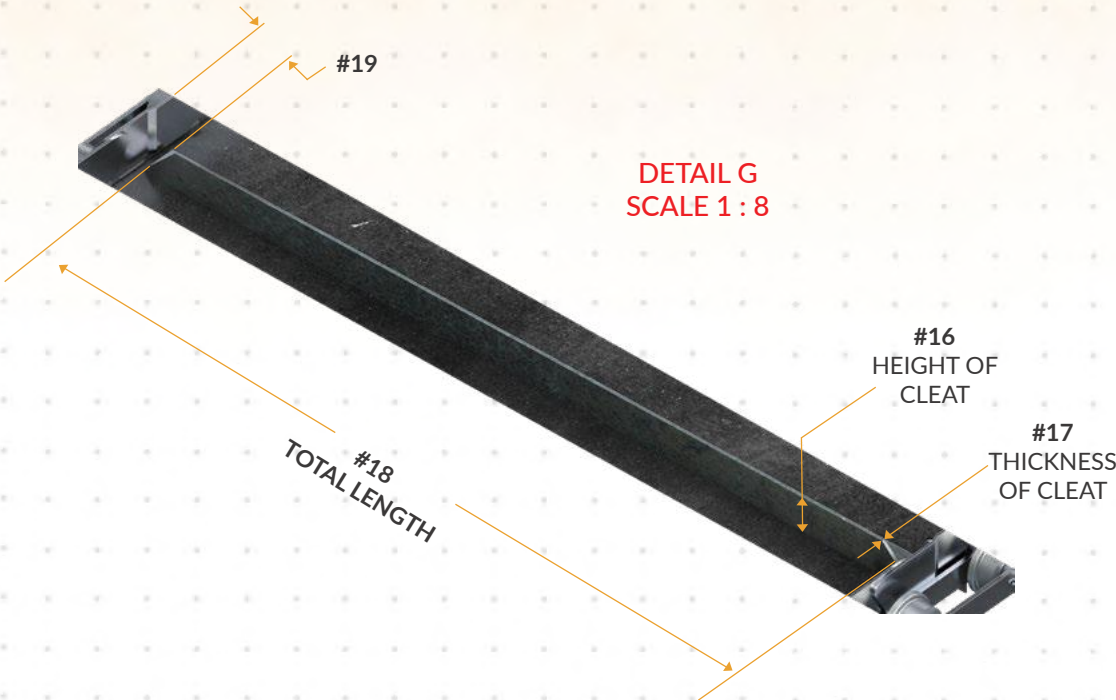
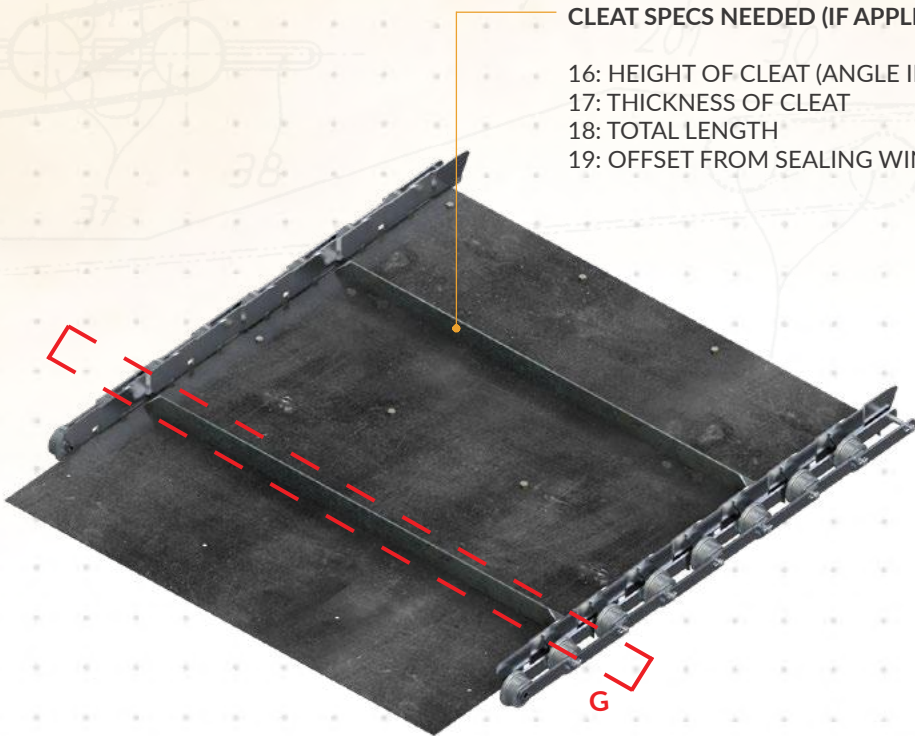
DETAIL E  
SCALE 1 : 2



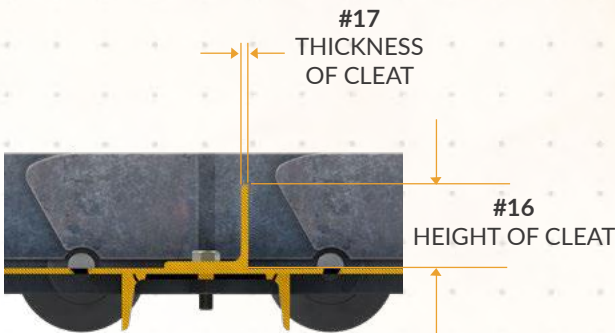


STEP D: CLEAT SPECS

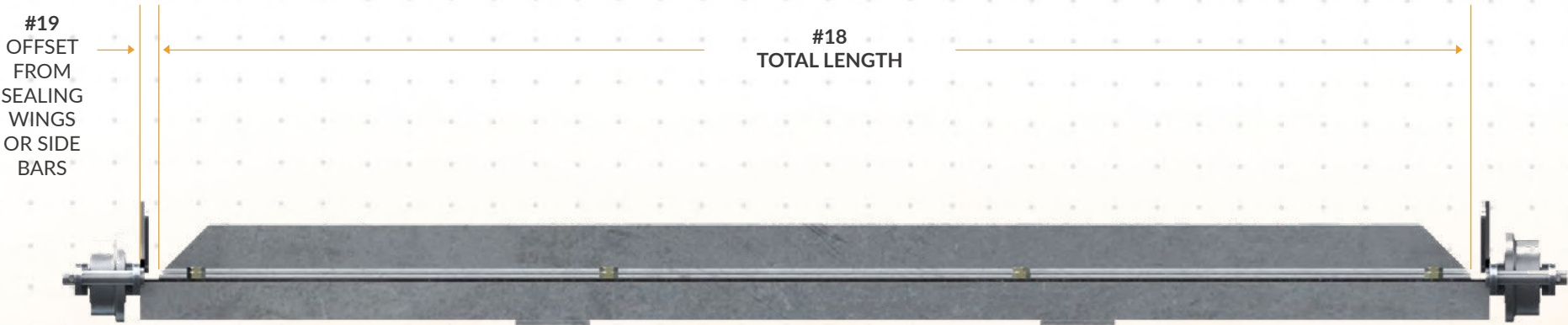
CLEAT SPECS NEEDED (IF APPLICABLE):  
16: HEIGHT OF CLEAT (ANGLE IRON SHOWN)  
17: THICKNESS OF CLEAT  
18: TOTAL LENGTH  
19: OFFSET FROM SEALING WING



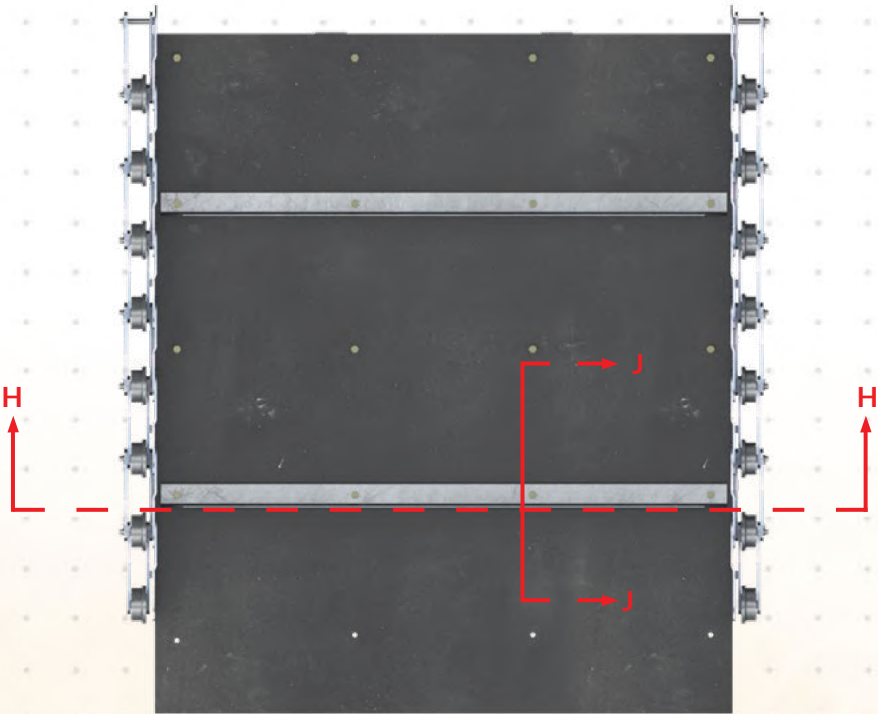
DETAIL G  
SCALE 1 : 8



SECTION J-J  
SCALE 1 : 3

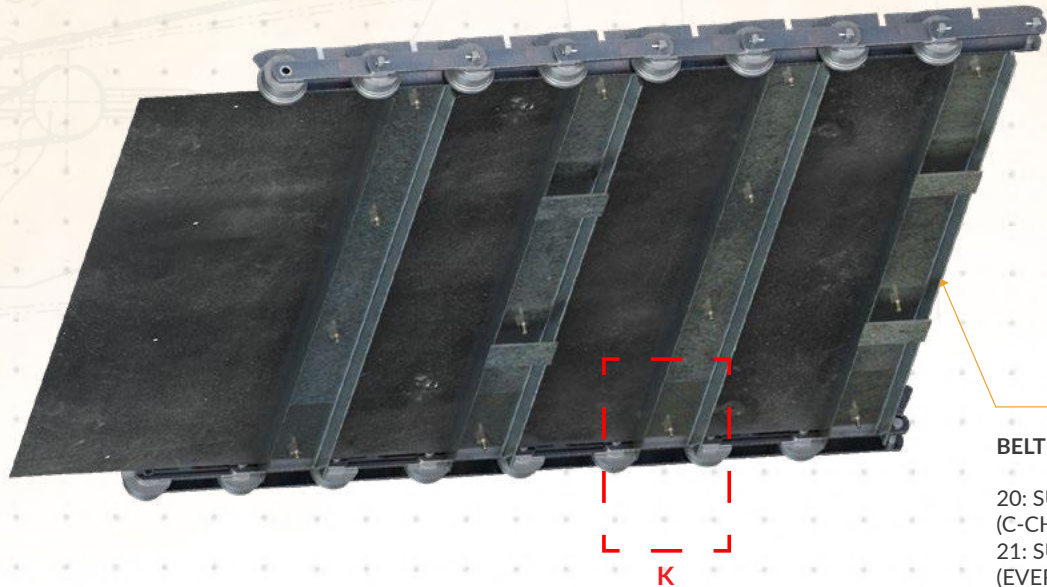


SECTION H-H





# STEP E: BELT UNDERSIDE SUPPORT SPECS



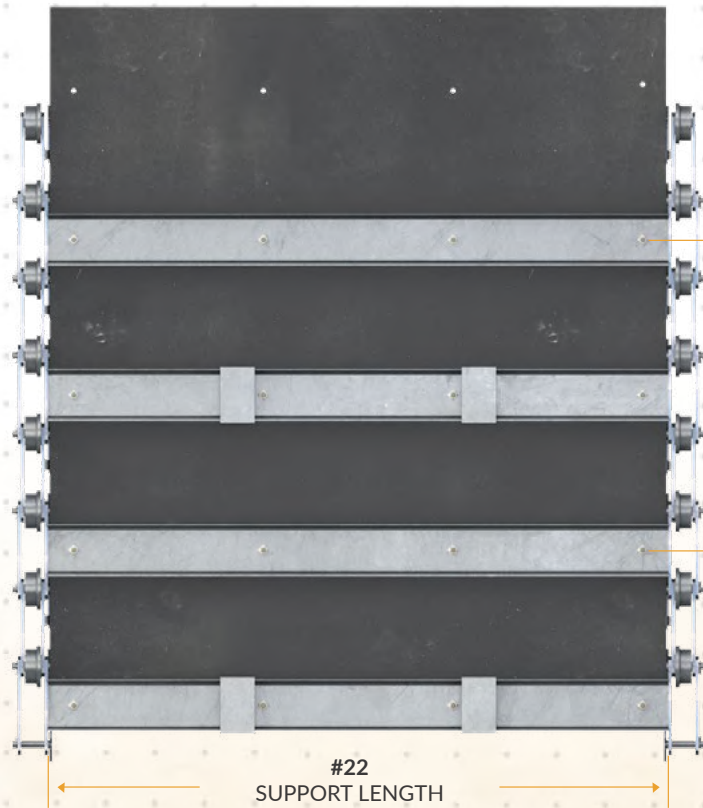
#20  
C-CHANNEL SHOWN  
\*COULD BE ANGLE IRON  
OR FLAT BAR

BELT UNDERSIDE SUPPORT SPECS NEEDED:

- 20: SUPPORT TYPE / SIZE  
(C-CHANNEL SHOWN)
- 21: SUPPORT SPACING  
(EVERY OTHER PITCH SHOWN)
- 22: SUPPORT LENGTH



DETAIL K  
SCALE 1 : 4

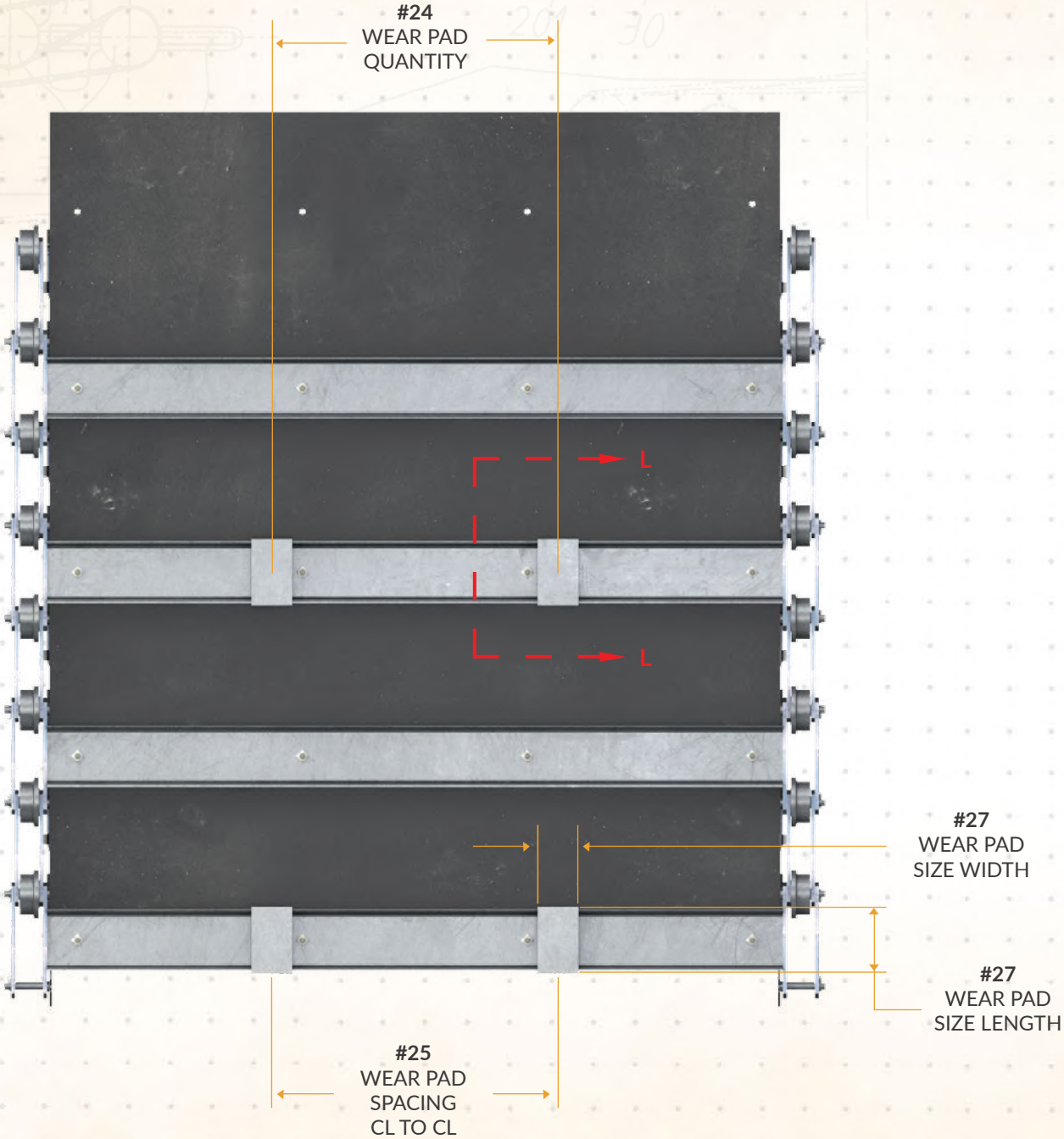


#21  
SUPPORT SPACING  
EVERY OTHER  
CHAIN PITCH SHOWN

#22  
SUPPORT LENGTH

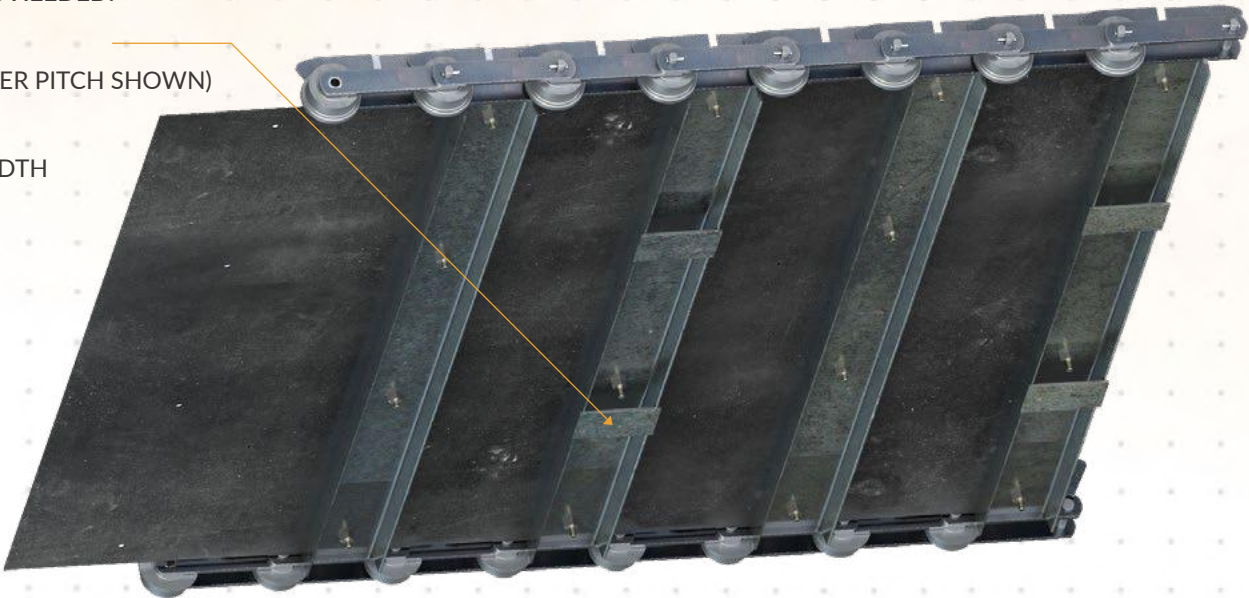


# STEP F: BELT UNDERSIDE WEAR PAD SPECS



## BELT UNDERSIDE SUPPORT SPECS NEEDED:

- 23: WEAR PAD THICKNESS
- 24: WEAR PAD QUANTITY (TWO PER PITCH SHOWN)
- 25: WEAR PAD SPACING
- 26: WEAR PAD LOCATION
- 27: WEAR PAD SIZE LENGTH & WIDTH



SECTION L-L  
SCALE 1 : 3

