

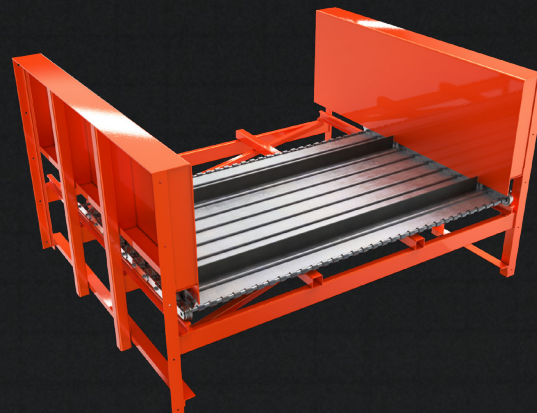
ROLLER CHAIN CONVEYOR BELTS

/ Collaborate / Create / Convey

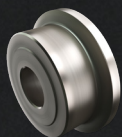
Hinged Steel Replacement Conveyor Belts

Meet our most flexible chain belt made. Designed to mold to your unique systems. Fluent hinged steel conveyor belts are ideal for recycling, ferrous and non-ferrous, mixed solid waste, sheared scrap, refuge and nearly all other applications with less than 10% glass shards.

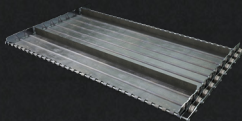
Hinged steel belts come in 4 inch, 6-inch and 9-inch pitch options up to 96" wide. $\frac{1}{4}$ " - $\frac{3}{8}$ " Thick Precision formed pans, precision die punched wings, single flanged and sintered steel rollers, solid locking pins and add-on options such as cleats, upgraded chain, C-channel backing, larger rollers and more.



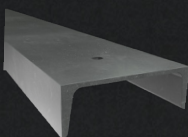
Solutions / Replacement Belt Parts



Hardened
Sintered Rollers



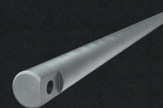
Assembled Hinged
Steel Section



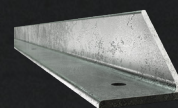
Heavy Duty
C-Channel



C1045
Precision Chain



Hinge Sleeve



$\frac{1}{4}$ " or $\frac{3}{8}$ " Thick
Coped Angle Cleats

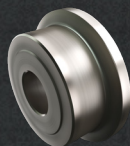
Rubber Combo Replacement Conveyor Belts

Fluent Rubber Combination conveyor belts are as heavy-duty as they come. These C-channel reinforced belts are the perfect mid-weight applications for processing cardboard, paper, old newspaper, plastics, shredded paper, and more.

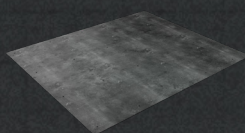
Rubber combo belts come in 6-inch, and 9-inch pitch options up to 84" wide (optional larger). 2 Ply 220# and 3 Ply 330# belting, precision die punched wings, single flanged and sintered steel rollers, solid locking pins C-channel backing and add-on options such as cleats, upgraded chain, larger rollers and more. These belts deliver smooth operations time and time again.



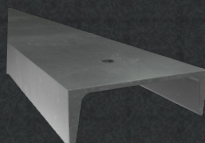
Solutions / Replacement Belt Parts



Hardened
Sintered Rollers



2 Ply 220# or 3 Ply
330# Rubber Segments



Heavy Duty
C-Channel



C1045
Precision Chain

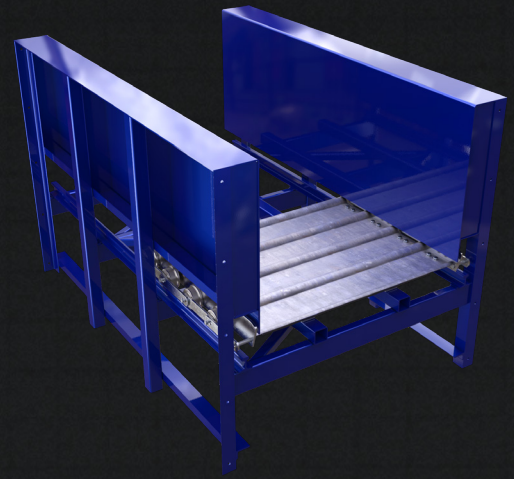


Assembled Rubber
Combo Segments

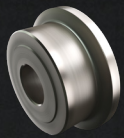
Apron Pan Replacement Conveyor Belts

Fluent Apron Pan conveyor belts are designed to make system maintenance as easy as possible. Made to be heavy-duty, high impact, high temperature resistant belts that is ideal to be used in recycling, slag handling, ferrous and non-ferrous, mixed solid waste, mining, foundry, sheared scrap, refuge, glass and many other robust and extreme applications. These are better suited with fines verses z-pans. These belts do all the heavy lifting.

Apron Pan belts come in 6-inch, 9-inch and 12-inch pitch options up to 108" wide. $\frac{1}{4}$ " - $\frac{1}{2}$ " Thick Precision formed beaded apron style pans, precision die punched wings, single flanged and sintered steel rollers, solid locking pins and add-on options such as cleats, upgraded chain, C-channel backing, larger rollers and more. So you're never out of options.



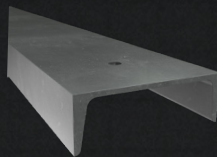
Solutions / Replacement Belt Parts



Hardened
Sintered Rollers



Assembled Apron
Pan Section



Heavy Duty
C-Channel



C1045
Precision Chain

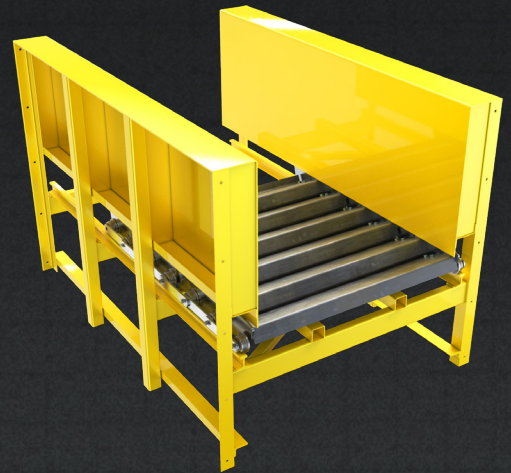


$\frac{1}{4}$ " or $\frac{3}{8}$ " Thick
Coped Angle Cleats

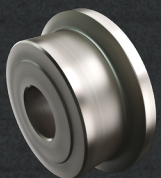
Z Pan Replacement Conveyor Belts

Fluent Z-Pan conveyor belts are our heavy lifters. Created for smooth performance while carrying the brunt of a load. Making sure your operations stay flawless through years of the most intense conditions. Designed to be heavy-duty, high impact, high temperature resistant belting that is ideal to be used in recycling, slag handling, ferrous and non-ferrous, mixed solid waste, mining, foundry, sheared scrap, refuge, glass and many other robust and extreme applications.

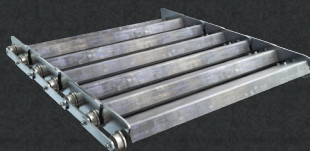
Z Pan belts come in 6-inch, 9-inch and 12-inch pitch options up to 108 wide. $\frac{1}{4}$ " - $\frac{1}{2}$ " Thick Precision formed Z style pans, precision die punched wings, single flanged and sintered steel rollers, solid locking pins and add-on options such as cleats, upgraded chain, larger rollers and more. Robust pieces designed with precision to last.



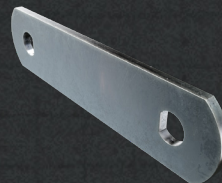
Solutions / Replacement Belt Parts



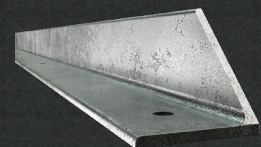
Hardened
Sintered Rollers



Assembled
Z-pan Section



C1045
Precision Chain



$\frac{1}{4}$ " or $\frac{3}{8}$ " Thick
Coped Angle Cleats