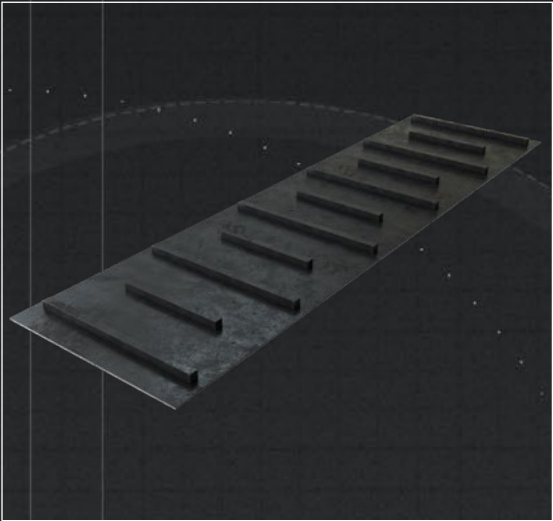


# MAGNETIC SEPARATOR BELTS

/ Collaborate / Create / Convey

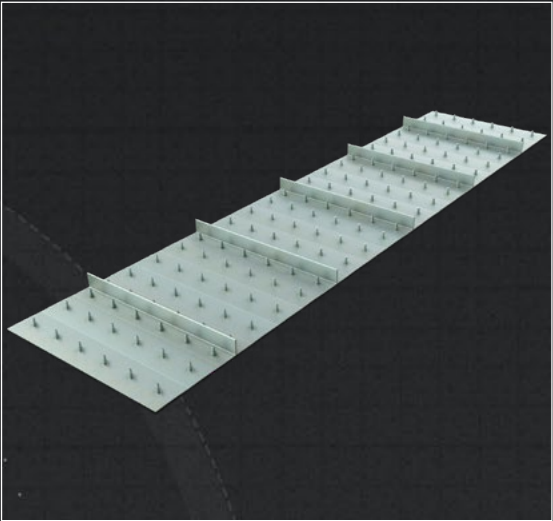
Fluent Conveyors offers a wide range of belts which make use of magnetic properties to sort and separate metals and non-metals. The sorted metal is conveyed outside of the magnetic field and safely collected and dumped. These types of belts are extremely durable and withstand the impacts from sharp metal items. The magnetic separator belt will revolve around a magnet suspended over a conveyor. Multiple belt materials are available, PVC, Rubber, and Urethane.

## CLEATED BELTS



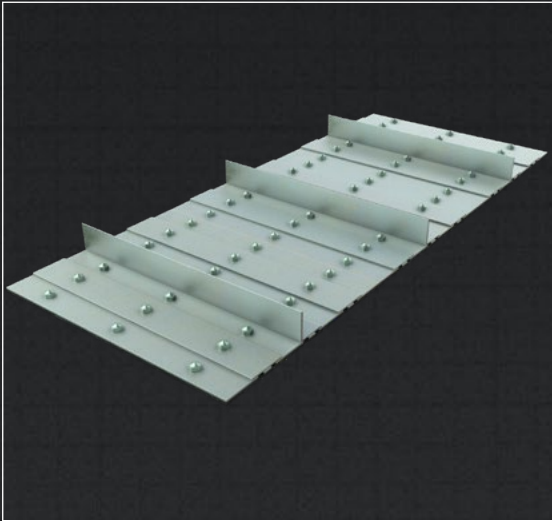
Cleated belts transport and contain the unwanted (non-magnetic) material away from the magnetic field for disposal and secondary collection.

## STAINLESS STEEL PLATED BELTS



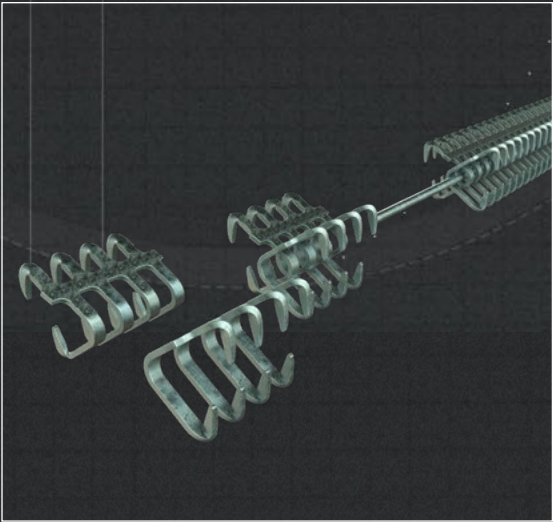
The rubber belt is covered by stainless plates (and cleats) in order to facilitate longer belt life and protection from sharp metal items being pulled into the magnetic field. Individual plates can also be replaced in the field for quicker maintenance.

## STAINLESS STEEL ANGLE IRON CLEATS



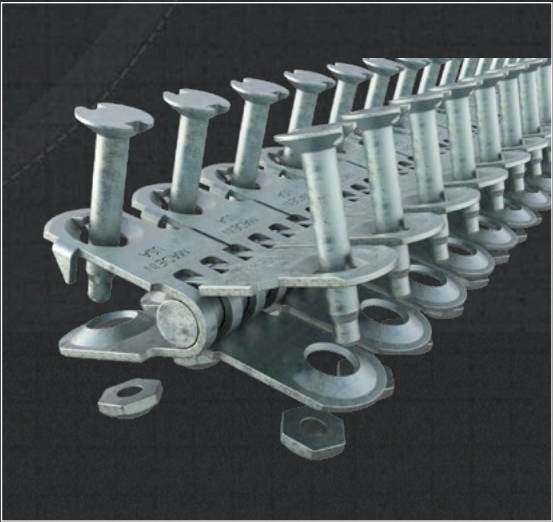
Durable and easily replaceable stainless steel angle cleats are attached to heavy duty rubber belting for magnetic separation. This type of setup is another method to protect the belt against sharp metal items.

## ALLIGATOR SPLICE STAINLESS STEEL



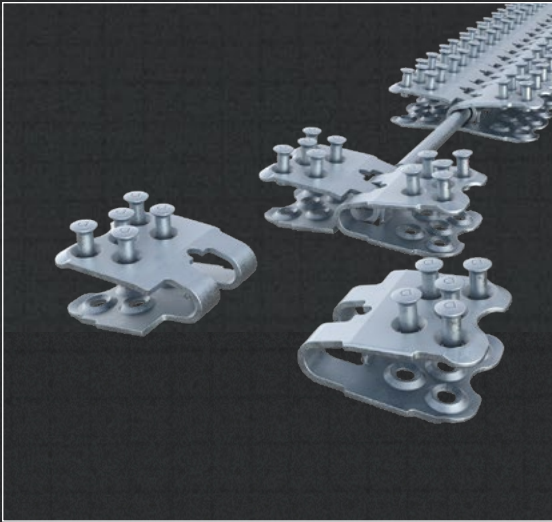
Alligator splicing is ideal for easy, economical installation of a low-profile belt splice. Available in continuous lengths, the system fits any belt width and provides uniform tension across the full belt width. Minimum pulley diameters range from 1" to 14". Installation can be done with mechanical tooling or a hammer.

## BOLT PLATE & HINGED SPLICES



Bolt Hinged Splices are ideal for belt conveyor applications subject to length adjustments because the joint can be separated easily by removing the hinge pin.

## RIVET PLATE & HINGED SPLICES



Rivet Plate Fastening System is recommended for high-tension applications using rubber-plied and PVC solid woven belting and for worn belts unfit for vulcanized splices, delivering performance & longevity.

**\*\*Please note we also offer non-mechanical vulcanized endless splices as well as super screw splice options.**



# Technical Specifications & Belt Modification Options

Please note not all belts can be configured with each option.

Cover Base Belt Options	<ul style="list-style-type: none"><li>PVC</li><li>Rubber</li></ul>	<ul style="list-style-type: none"><li>Urethane</li><li>Additional Options May Be Available</li></ul>
Belt Ply Options	<ul style="list-style-type: none"><li>2 Ply</li><li>3 Ply</li></ul>	
Splice Options Non-Magnetic	<ul style="list-style-type: none"><li>Endless Non-Mechanical Splices</li><li>Custom Splice Options</li><li>Finger Splice</li></ul>	<ul style="list-style-type: none"><li>Longitudinal Splice</li><li>Rivet Plate &amp; Hinged</li><li>Bolt Hinged &amp; Plate</li><li>Alligator Hinged &amp; Clips</li><li>Super-Screw Splice</li><li>Vulcanized</li></ul>
Industries	<ul style="list-style-type: none"><li>Coal Handling</li><li>Cement</li><li>Food Production</li><li>General Manufacturing</li></ul>	<ul style="list-style-type: none"><li>Recycled Concrete Plants</li><li>Reclaimed Steel Plants</li><li>Recycled Material Plants</li><li>Solid Waste Facilities</li></ul>
Options	<div>Stainless Steel Plated Belt</div> <ul style="list-style-type: none"><li>Cleated Profiles<ul style="list-style-type: none"><li>1" to 4" In Height</li><li>Up to ¼" Thick</li></ul></li><li>Used and Ordered For Any Overhead Magnets</li></ul>	<div>Urethane Belt</div> <ul style="list-style-type: none"><li>Urethane Cleats</li><li>Ceramic Chips For Abrasion Resistance</li></ul> <div>Rubber Belt</div> <ul style="list-style-type: none"><li>Cleated Profiles<ul style="list-style-type: none"><li>Standard Thickness - ½" to 6" Tall</li><li>Thicker - 1" to 6" Tall</li><li>Square - ¾" to 1"</li></ul></li></ul>