

REPLACEMENT AC OR DC AUTOMATIC ELECTRIC OILERS

/ Collaborate / Create / Convey

Fluent Conveyors offers durable and shatterproof roller chain oilers to be used with all roller chain conveyors including heavy duty and light duty rubber combo & steel belts. Advantages of the consistent usage of oilers can extend the life of your belt up to 30X and reduce noise levels.

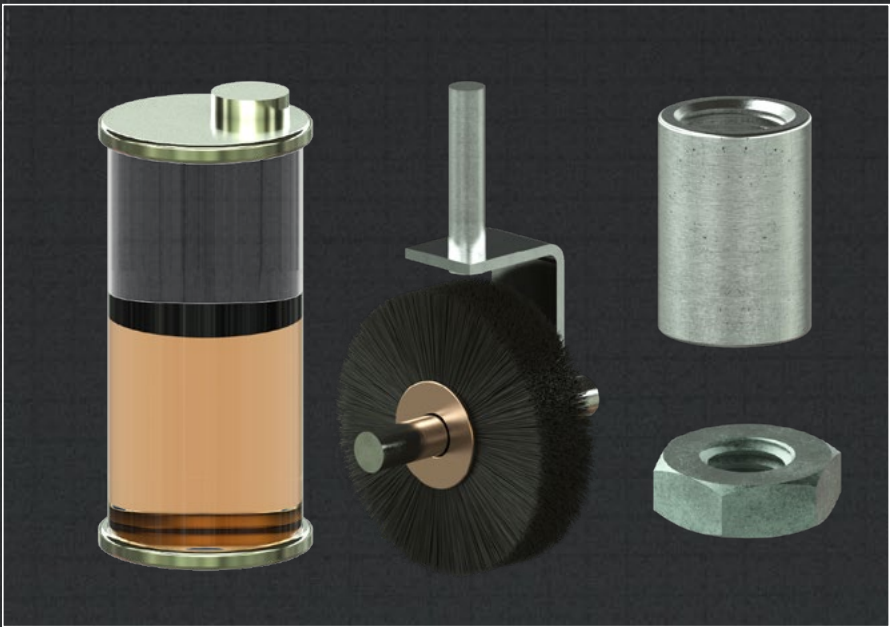
Lubrication occurs when the solenoid is activated. Flow from the reservoir is regulated by the sight feed valve. Acrylic reservoirs are durable and shatterproof, suitable for temperatures up to 160° F. Lubricators are available with or without a center post. Units described with a “clear view” style have a lightweight, durable design that allows maximum fluid visibility by eliminating the center tie rod.

SINGLE FEED LUBRICATORS



Fewer components for a cleaner line of sight, permanent bond eliminates gaskets, universal fitting allows reservoir to be switched out for a different capacity & optional acrylic or Pyrex (glass) reservoir.

REPLACEMENT OILER PARTS



Fluent offers all manual or electric oiler parts for its equipment: fittings, solenoids, brushed, acrylic or Pyrex (glass) reservoirs and endplates.

** Contact us for additional oiler requirements.

Technical Specifications & Automatic Electric Oiler Modification Options

Please note not all Automatic Electric Oilers can be configured with each option.

Reservoir Capacity	<ul style="list-style-type: none">• ½ Gallon• 1 Gallon
Reservoir Diameter	<ul style="list-style-type: none">• 5-½"
Reservoir Material	<ul style="list-style-type: none">• Acrylic
Temperature Range	<ul style="list-style-type: none">• -20°F to 160°F
Voltage input	<ul style="list-style-type: none">• 120V @ 60 Hz• 24V DC
Total Height	<ul style="list-style-type: none">• 16-9/16"
Features	<ul style="list-style-type: none">• Steel Threaded Pipe Nipple ½" (2 Pieces)• Steel Threaded Pipe Coupling ½"• ⅝" Hex Nut (Mounting Nut)• 3" Diameter Nylon Brush• Clean View Single Fee Automated Lubricator With ½" Male NPT.