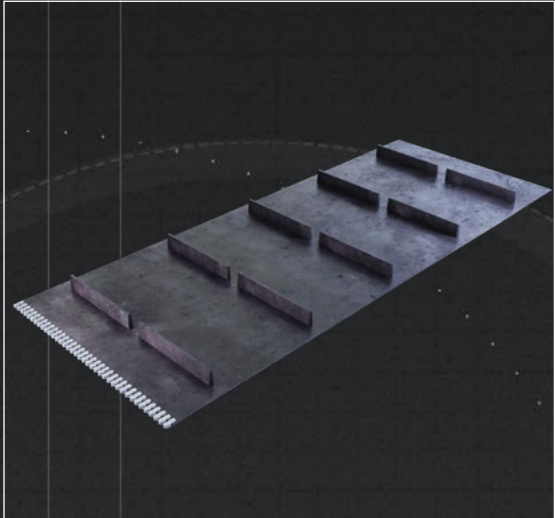


CLEATED CONVEYOR REPLACEMENT BELTS

/ Collaborate / Create / Convey

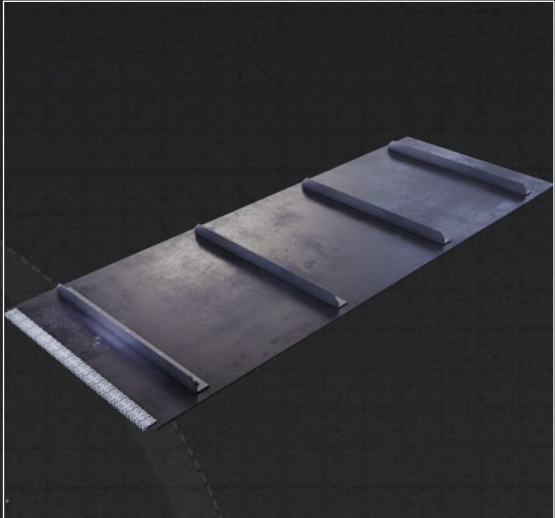
Fluent Conveyors Cleated Conveyor Belts are built with fabric or tension plies with monofilament, fiberglass or steel breaker cross rigid plies. Cleats are hot vulcanized to the belt creating the strongest cleat connections. Fluent also offers replaceable urethane cleat blades allowing them to maintain full carrying capacity for the life of the belt. Cleats can either be vulcanized to the belt or tacked on to conveyor belt without removing belt from conveyor.

STANDARD AND BEEFY “I” CLEATS



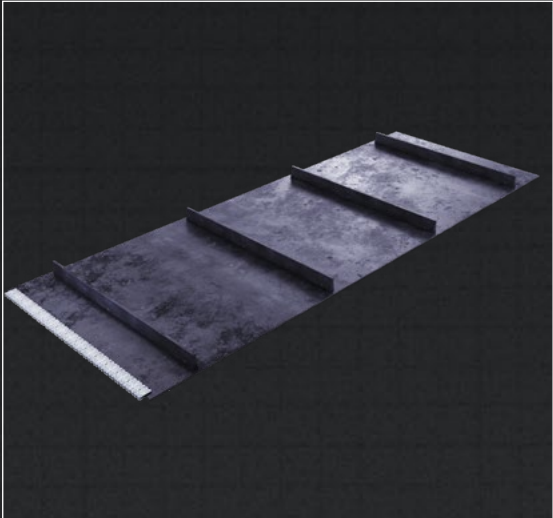
Rugged tall cleats are added to the belt surface using a welding process called vulcanization. These cleats are customizable to a variety of dimensions along the width and the length of the belt to fit a wide variety of high loads and steep to vertical angles.

HIGH INCLINE CLEATS



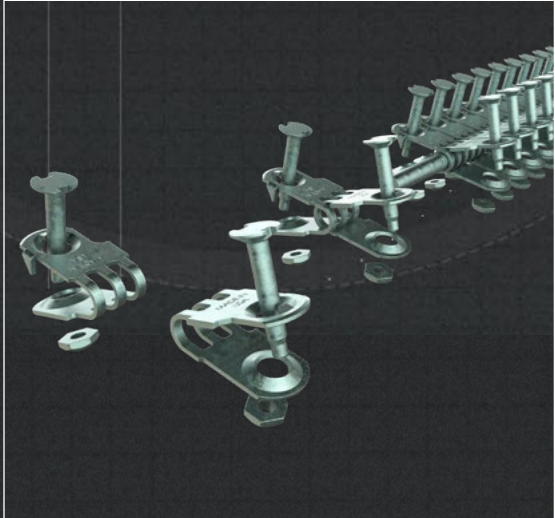
Extruded rubber and steel cleats are desired in the most industrial environments due to their low cost and durability. The bottom of cleat is concave to provide tight seal when bolted to belt. This makes repairs easy and down time less as the cleats are applied to belt with punch and wrench.

CUSTOM CLEATED OPTIONS FOR 100’S OF INDUSTRIES



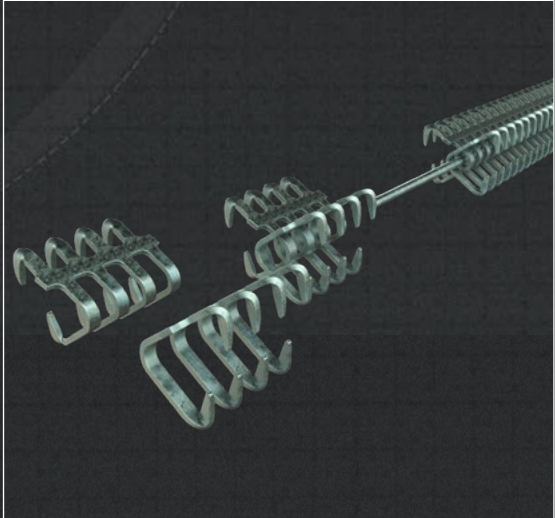
Mining, waste, recycling, Material Recovery Facilities (MRF), sand, stone, gravel handling, metal parts, food processing, bio-fuel, agricultural harvesting, paper, plastics, textiles and more!

ALLIGATOR HINGED & TOOTH SPLICES



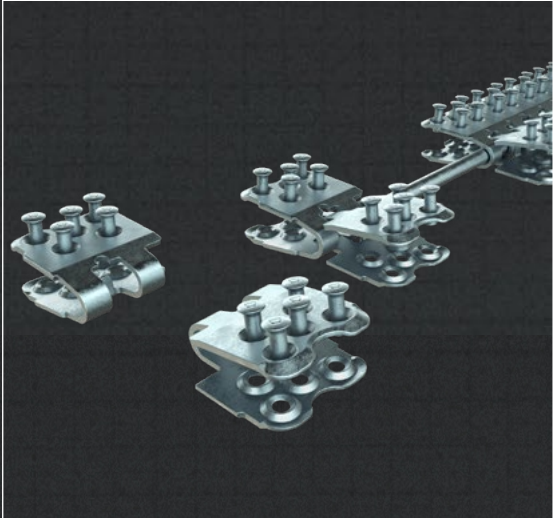
Alligator splicing is ideal for easy, economical installation of a low-profile belt splice. Available in continuous lengths, the system fits any belt width and provides uniform tension across the full belt width. Minimum pulley diameters range from 1” to 14”. Installation can be done with mechanical tooling or a hammer.

BOLT PLATE & HINGED SPLICES



Bolt hinged splices are ideal for belt conveyor applications subject to length adjustments because the joint can be separated easily by removing the hinge pin.

RIVET PLATE & HINGED SPLICES



Rivet Plate Fastening System is recommended for high tension applications using rubber-plied and PVC solid woven belting and for worn belts unfit for vulcanized splices, delivering performance & longevity.

**Please note we also offer non-mechanical vulcanized endless splices as well as super screw splice options.

Technical Specifications & Belt Modification Options

Please note not all belts can be configured with each option.

Belting Material Options	<ul style="list-style-type: none">Black Standard High Abrasion Resistant (SBR) RubberBlack Heat Resistant (HR) RubberBlack Moderately Oil Resistant (MOR) And Super Oil Resistant (SOR) RubberWhite FDA RubberBlack Flame Retardant (FR) RubberOther Compounds Meeting Specific DIN Standards Available		
Cleat Material Options	<ul style="list-style-type: none">Black StandardBlack Oil ResistantBlack High Heat ResistantBlack Flame Retardant (FR)	<ul style="list-style-type: none">Black High Oil ResistantWhite Oil And Fat Resistant (FDA) CompoundsRubber And PVC Compounds	<ul style="list-style-type: none">NitrilePVCEPDMAngle Steel
Cross-Rigid Ply Options	<ul style="list-style-type: none">Monofilament Cross Rigid Ply	<ul style="list-style-type: none">Fiberglass Cross Rigid Ply	<ul style="list-style-type: none">Steel Breaker Cross Rigid Ply
Cleat Options	<ul style="list-style-type: none">Standard CleatsI CleatsScoop CleatsBeefy Cleats	<ul style="list-style-type: none">High Incline - S CleatsHigh Incline - C CleatsLug & Square CleatsSteel-Reinforced Cleats	<ul style="list-style-type: none">Notched Cleats, V-Notched CleatsNotched Chevron CleatsTack on Cleats
Cleat Height Options	<ul style="list-style-type: none">1" (25mm) up to 8" (200 mm)		
Applications	<ul style="list-style-type: none">WasteRecycling (MRF)Material Handling	<ul style="list-style-type: none">Package HandlingTire RecyclingFood Processing	<ul style="list-style-type: none">AgricultureDistribution CentersParcel Facilities
Storage Recommendations	<ul style="list-style-type: none">Store Belt Indoors	<ul style="list-style-type: none">Best If Installed Within 1 Year	