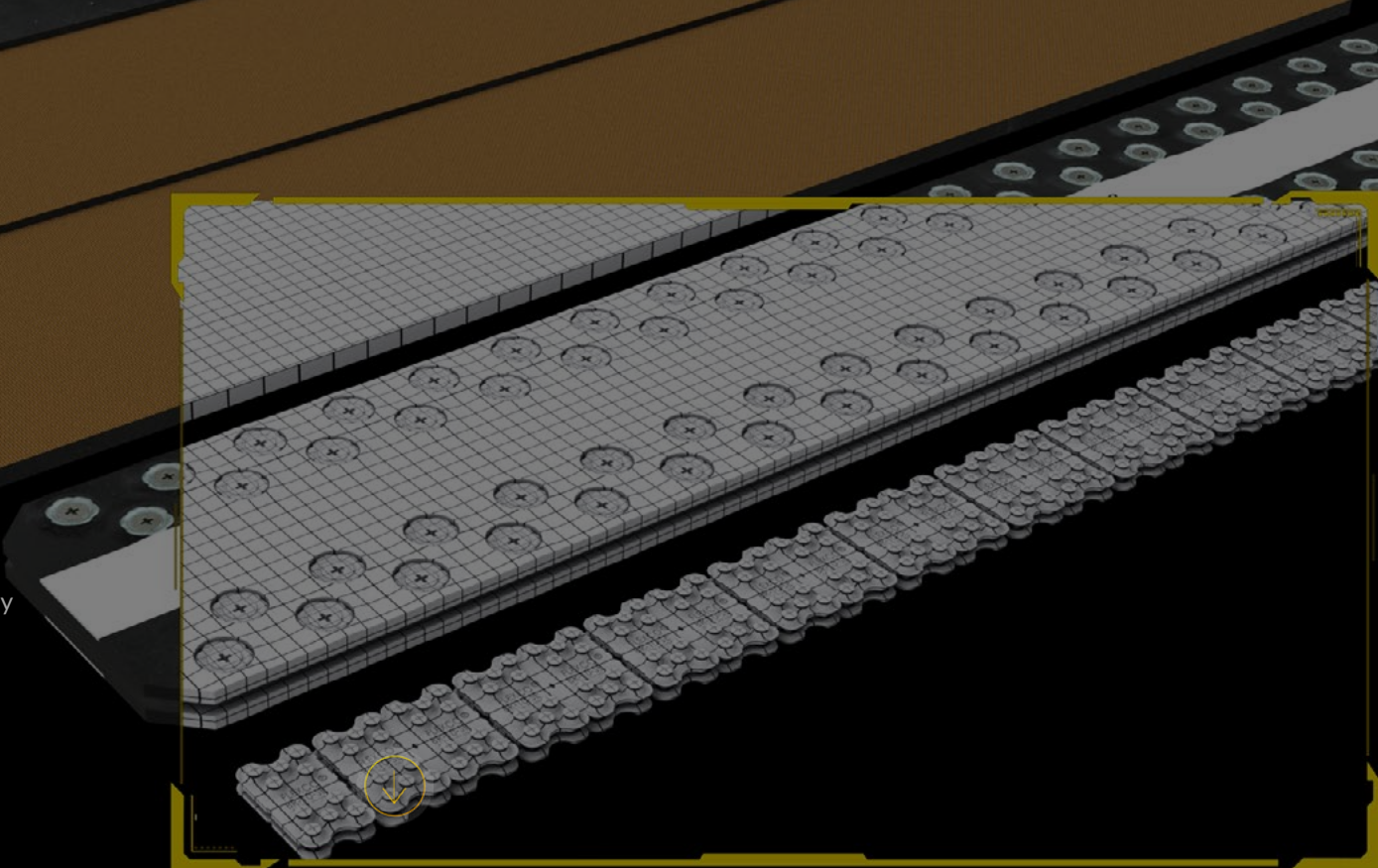


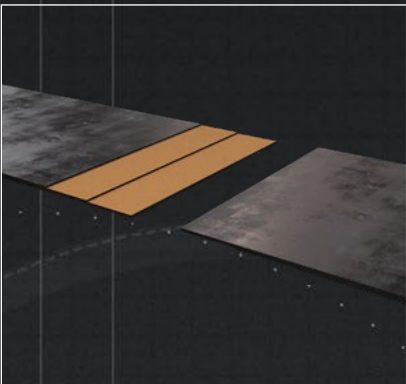
# BELT SPLICES

/ Collaborate / Create / Convey



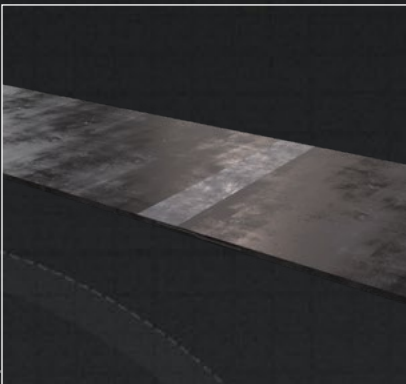
Fluent Conveyors multiple splice options are completely flexible and robust enough to meet the needs of any and all splicing situations. Common and specialized mechanical splices and endless belt splices provide a variety of options through flexibility and installation ease to meet what is required in the field and for the customer.

### PREPARED LAP SPLICE



Prepared lap splices are included with belt when delivered. The laps are prepared to desired length but not vulcanized, which enables the end user to splice endless on the belt. Cold splicing is available via the end users needs and communication to us.

### VULCANIZED ENDLESS SPLICE



Vulcanized splices are stronger than mechanical splices. The endless splice does not encounter pull-out or tearing of the belt. The splice prevents damage to product being conveyed as the splice lays flat to the belt.

### LONGITUDINAL SPLICE



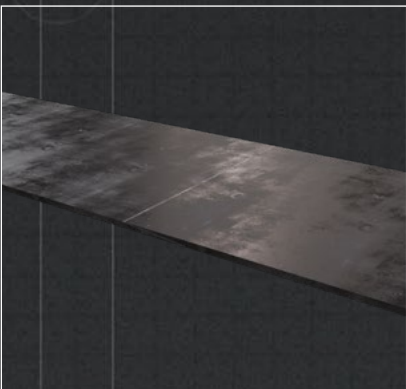
A longitudinal splice is ideal for extra-wide belts in any thickness and can be endless. Multiple materials can be used for this splice type; woven PVC, rough tops, urethane covered, black rubber, and thermoplastic.

### FINGER SPLICE



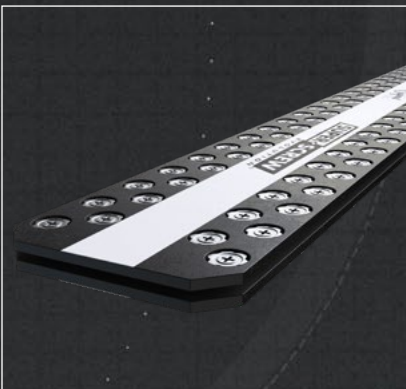
The finger splice is versatile and provides a smooth splice that provides long term durability. Common belt materials for this splice are PVC, thermoplastic, and urethane.

### SKIVED ENDLESS SPLICE



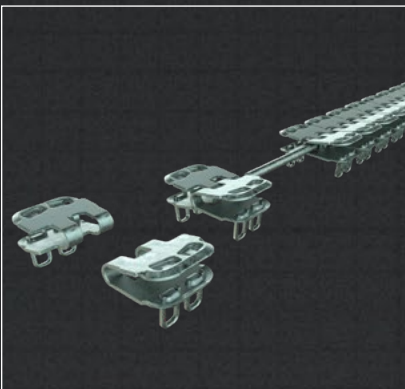
Skived splices are typically used for non-plyed belts when a stepped down or mechanical splice is not applicable. The skived splice is tapered on both ends to create a consistent and smooth splice area.

### SUPER-SCREW SPLICE



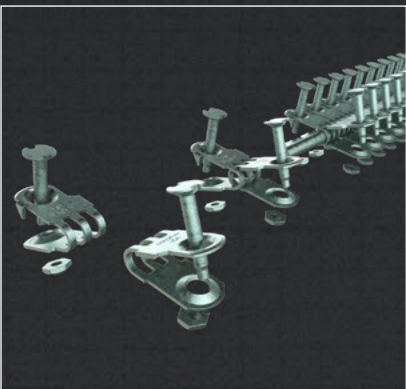
The Super-Screw splice is easier and faster to install, thinner and more resistant, and fully integrates into the belt for enhanced stability. Speed is the answer with the Super-Screw Splice. Installation minimizes machine downtime, works in harsh conditions, easy and quick, compatible with all types of scrapers, and small pulley diameters are not an issue.

### ALLIGATOR STAPLE SPLICE



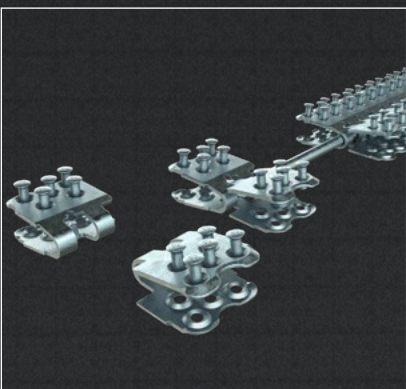
Alligator staple splices are ideal for easy, economical installation of a low-profile belt splice. Available in continuous lengths, the system fits any belt width and provides uniform tension across the full belt width. Minimum pulley diameters range from 1" to 14". Installation can be done with mechanical tooling or a hammer.

### BOLT HINGED SPLICE



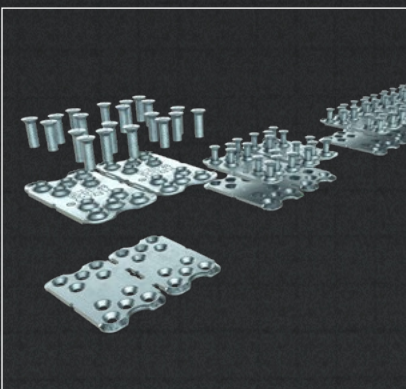
Bolt hinged splices are ideal for belt conveyor applications subject to length adjustments because the joint can be separated easily by removing the hinge pin.

### RIVET HINGED SPLICE



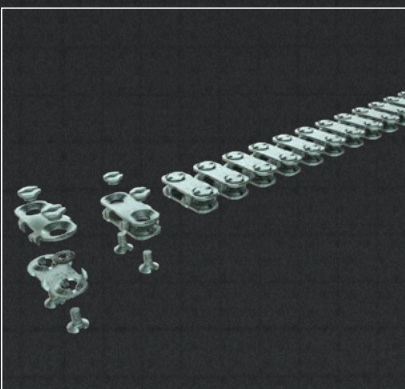
The Rivet Hinged Splice fastening system delivers performance and long life. Ideal for use on rubber-plyed and PVC solid woven belts. The hinged portion allows for easy installation and flexibility when working with various belt widths.

### RIVET PLATE SPLICES



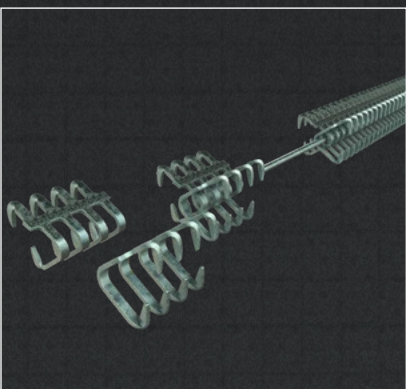
The Rivet Plate Fastening System is recommended for high tension applications using rubber-plyed and PVC solid woven belting and for worn belts unfit for vulcanized splices, delivering performance & longevity.

### BOLT PLATE SPLICES



Bolt Plate Splices provide a strong splice due to the high tensile strength bolts which compress the top and bottom plates together. The teeth of the plates penetrate the carcass without damaging the fibers for a truly versatile splice.

### ALLIGATOR LACING SPLICE



Quick and easy installation of the Alligator Lacing Splice provides a long-lasting uniform tension across the belt width. Noise reduction is accomplished and reduction of splice interference with conveyed items due to the low profile of the splice.

**\*\*Please note not all splices are shown. If you have additional splice needs please contact Fluent Conveyors.**



# Technical Specifications & Belt Splice Modification Options

Please note not all belt splices can be configured with each option.

|                           |   |  |  |  |
|---------------------------|---|--|--|--|
| Prepared Lap Splice       | <b>Belt Material:</b>   | <b>Features:</b>   | <b>Belt &amp; Pulley Information:</b>  |  |
|                           | <ul style="list-style-type: none"><li>Woven PVC</li><li>Rubber-plied</li><li>Vulcanized</li><li>Un-vulcanized</li><li>Thermoplastic</li><li>Rough Top</li></ul>                       | <ul style="list-style-type: none"><li>Single Piece</li><li>Light, Medium, and Heavy Duty</li><li>Fully Integrated Into Belt</li></ul>  | <ul style="list-style-type: none"><li>Belt Thickness - 1⁄16" to 1"</li><li>Pulley Diameter Ranges - 15⁄16" to 42"</li></ul>            |  |
|                           |   |  |  |  |
|                           |   |  |  |  |
|                           |   |  |  |  |
| Vulcanized Endless Splice | <b>Belt Material:</b>   | <b>Features:</b>   | <b>Belt &amp; Pulley Information:</b>  |  |
|                           | <ul style="list-style-type: none"><li>Woven PVC</li><li>Rubber-plied</li><li>Vulcanized</li><li>Thermoplastic</li><li>Rough Top</li></ul>   | <ul style="list-style-type: none"><li>Single Piece</li><li>Light, Medium, and Heavy Duty</li><li>Fully Integrated Into Belt</li></ul>  | <ul style="list-style-type: none"><li>Belt Thickness - 1⁄16" to 1"</li><li>Pulley Diameter Ranges - 15⁄16" to 42"</li></ul>            |  |
|                           |   |  |  |  |
|                           |   |  |  |  |
|                           |   |  |  |  |
| Longitudinal Splice       | <b>Belt Material:</b>   | <b>Features:</b>   | <b>Belt &amp; Pulley Information:</b>  |  |
|                           | <ul style="list-style-type: none"><li>Woven PVC</li><li>Rubber-plied</li><li>Vulcanized</li><li>Un-vulcanized</li><li>Thermoplastic</li><li>Rough Top</li></ul>                       | <ul style="list-style-type: none"><li>Single Piece</li><li>Light, Medium, and Heavy Duty</li><li>Fully Integrated Into Belt</li></ul>  | <ul style="list-style-type: none"><li>Belt Thickness - 1⁄16" to 1"</li><li>Pulley Diameter Ranges - 15⁄16" to 42"</li></ul>            |  |
|                           |   |  |  |  |
|                           |   |  |  |  |
|                           |   |  |  |  |
| Finger Splice             | <b>Belt Material:</b>   | <b>Features:</b>   | <b>Belt &amp; Pulley Information:</b>  |  |
|                           | <ul style="list-style-type: none"><li>Woven PVC</li><li>Rubber-plied</li><li>Thermoplastic</li></ul>  | <ul style="list-style-type: none"><li>Single Piece</li><li>Light, Medium, and Heavy Duty</li><li>Fully Integrated Into Belt</li></ul>  | <ul style="list-style-type: none"><li>Belt Thickness - 1⁄16" to 1"</li><li>Pulley Diameter Ranges - 15⁄16" to 42"</li></ul>            |  |
|                           |   |  |  |  |
|                           |   |  |  |  |
|                           |   |  |  |  |
| Skived Endless Splice     | <b>Belt Material:</b>   | <b>Features:</b>   | <b>Belt &amp; Pulley Information:</b>  |  |
|                           | <ul style="list-style-type: none"><li>Woven PVC</li><li>Rubber-plied</li><li>Vulcanized</li><li>Thermoplastic</li><li>Rough Top</li></ul>   | <ul style="list-style-type: none"><li>Single Piece</li><li>Light, Medium, and Heavy Duty</li><li>Fully Integrated Into Belt</li></ul>  | <ul style="list-style-type: none"><li>Belt Thickness - 1⁄16" to 1"</li><li>Pulley Diameter Ranges - 15⁄16" to 42"</li></ul>            |  |
|                           |   |  |  |  |
|                           |   |  |  |  |
|                           |   |  |  |  |
| Super Screw Splice        | <b>Belt Material:</b>   | <b>Features:</b>   | <b>Belt &amp; Pulley Information:</b>  | <b>Splice Material:</b>  |
|                           | <ul style="list-style-type: none"><li>Woven PVC</li><li>Rubber-plied</li><li>Vulcanized</li><li>Un-vulcanized</li><li>Thermoplastic</li><li>Rough Top</li><li>And Many More</li></ul> | <ul style="list-style-type: none"><li>Single Piece</li><li>Light, Medium, and Heavy Duty</li><li>Fully Integrated Into Belt</li></ul>  | <ul style="list-style-type: none"><li>Belt Thickness - 5⁄32" to 13⁄16"</li><li>Pulley Diameter Ranges - 6" to 20"</li></ul>            | <ul style="list-style-type: none"><li>Heat</li><li>Fire</li><li>Oil</li><li>Abrasion Resistant</li><li>Sliding Bed/Friction Bottom</li><li>Heat Retardant</li><li>Very Low Temperature</li></ul> |
|                           |   |  |  |  |
|                           |   |  |  |  |
|                           |   |  |  |  |
| Alligator Staple Splice   | <b>Belt Material:</b>   | <b>Features:</b>   | <b>Belt &amp; Pulley Information:</b>  | <b>Splice Material:</b>  |
|                           | <ul style="list-style-type: none"><li>Woven PVC</li><li>Rubber-plied</li><li>Vulcanized</li><li>Un-vulcanized</li><li>Thermoplastic</li><li>Rough Top</li><li>And Many More</li></ul> | <ul style="list-style-type: none"><li>Single Piece</li><li>Rated Up To 200 PIW</li><li>Partially Integrated Into Belt</li><li>Abrasion Resistant</li></ul>   | <ul style="list-style-type: none"><li>Belt Thickness - 1⁄4" to 1⁄4"</li><li>Pulley Diameter Ranges - 2" to 4"</li></ul>                | <ul style="list-style-type: none"><li>Steel</li><li>Stainless Steel</li><li>Magnetic Stainless Steel</li><li>MegAlloy</li></ul>  |
|                           |   |  |  |  |
|                           |   |  |  |  |
|                           |   |  |  |  |
| Bolt Hinged Splice        | <b>Belt Material:</b>   | <b>Features:</b>   | <b>Belt &amp; Pulley Information:</b>  | <b>Splice Material:</b>  |
|                           | <ul style="list-style-type: none"><li>Woven PVC</li><li>Rubber-plied</li><li>Vulcanized</li><li>Un-vulcanized</li><li>Thermoplastic</li><li>Rough Top</li><li>And Many More</li></ul> | <ul style="list-style-type: none"><li>Multi-Piece System</li><li>Rated From 190 to 300 PIW</li><li>Partially Integrated Into Belt</li><li>Pin Removal Allows For Easy Joint Separation</li><li>Formed Teeth Add Strength To Penetration Of Belt Carcass Without Damaging Belt Fibers</li></ul> | <ul style="list-style-type: none"><li>Belt Thickness - 1⁄4" to 5⁄8"</li><li>Pulley Diameter Ranges - 6" to 9"</li></ul>                | <ul style="list-style-type: none"><li>Everdur</li><li>MegAlloy</li><li>Steel</li><li>Stainless Steel</li></ul>   |
|                           |   |  |  |  |
|                           |   |  |  |  |
|                           |   |  |  |  |
| Rivet Hinged Splice       | <b>Belt Material:</b>   | <b>Features:</b>   | <b>Belt &amp; Pulley Information:</b>  | <b>Splice Material:</b>  |
|                           | <ul style="list-style-type: none"><li>Woven PVC</li><li>Rubber-plied</li><li>Vulcanized</li><li>Un-vulcanized</li><li>Thermoplastic</li><li>Rough Top</li><li>And Many More</li></ul> | <ul style="list-style-type: none"><li>Multi-Piece System</li><li>Rated From 330 to 2000 PIW</li><li>Partially Integrated Into Belt</li><li>Easy To Remove To Extend Or Clean Belts</li><li>Excellent solution for worn belts unfit for vulcanizing</li></ul>                                   | <ul style="list-style-type: none"><li>Belt Thickness - 1⁄8" to 1" (after skiving)</li><li>Pulley Diameter Ranges - 5" to 42"</li></ul> | <ul style="list-style-type: none"><li>Steel</li><li>Stainless Steel</li><li>Rustalloy</li><li>MegAlloy</li></ul>   |
|                           |   |  |  |  |
|                           |   |  |  |  |
|                           |   |  |  |  |
| Rivet Plate Splice        | <b>Belt Material:</b>   | <b>Features:</b>   | <b>Belt &amp; Pulley Information:</b>  | <b>Splice Material:</b>  |
|                           | <ul style="list-style-type: none"><li>Woven PVC</li><li>Rubber-plied</li><li>Vulcanized</li><li>Un-vulcanized</li><li>Thermoplastic</li><li>Rough Top</li><li>And Many More</li></ul> | <ul style="list-style-type: none"><li>Multi-Piece System</li><li>Recommended For High-Tension Applications</li><li>Rated From 400 to 800 PIW</li><li>Partially Integrated Into Belt</li><li>Compatible With Trough Belts</li></ul>   | <ul style="list-style-type: none"><li>Belt Thickness - 3⁄16" to 15⁄16"</li><li>Pulley Diameter Ranges - 14" to 36"</li></ul>           | <ul style="list-style-type: none"><li>Steel</li><li>Stainless Steel</li><li>Everdur</li><li>MegAlloy</li></ul>   |
|                           |   |  |  |  |
|                           |   |  |  |  |
|                           |   |  |  |  |
| Bolt Plate Splice         | <b>Belt Material:</b>   | <b>Features:</b>   | <b>Belt &amp; Pulley Information:</b>  | <b>Splice Material:</b>  |
|                           | <ul style="list-style-type: none"><li>Woven PVC</li><li>Rubber-plied</li><li>Vulcanized</li><li>Un-vulcanized</li><li>Thermoplastic</li><li>Rough Top</li><li>And Many More</li></ul> | <ul style="list-style-type: none"><li>Multi-Piece System</li><li>Rated From 150 to 620 PIW</li><li>Partially Integrated Into Belt</li><li>Sift Free Splice</li><li>Teeth Penetrate Without Damaging Belt Fibers</li></ul>  | <ul style="list-style-type: none"><li>Belt Thickness - 3⁄16" to 2"</li><li>Pulley Diameter Ranges - 12" to 48"</li></ul>               | <ul style="list-style-type: none"><li>Everdur</li><li>MegAlloy</li><li>Steel</li><li>Promal (Top Plates Only)</li><li>Rubber Covered Top Plates</li></ul>  |
|                           |   |  |  |  |
|                           |   |  |  |  |
|                           |   |  |  |  |
| Alligator Lacing Splice   | <b>Belt Material:</b>   | <b>Features:</b>   | <b>Belt &amp; Pulley Information:</b>  | <b>Splice Material:</b>  |
|                           | <ul style="list-style-type: none"><li>Woven PVC</li><li>Rubber-plied</li><li>Vulcanized</li><li>Un-vulcanized</li><li>Thermoplastic</li><li>Rough Top</li><li>And Many More</li></ul> | <ul style="list-style-type: none"><li>Continuous Lengths</li><li>Rated Up To 200 PIW</li><li>Partially Integrated Into Belt</li><li>Vice-Like Hold With Teeth Embedded Lengthwise In Belt</li><li>Easy Cleaning And Sanitation Of Belts Achieved By Removal Of Hinge Pins</li></ul>            | <ul style="list-style-type: none"><li>Belt Thickness - Up To 1⁄2"</li><li>Pulley Diameter Ranges - 1" To 14"</li></ul>                 | <ul style="list-style-type: none"><li>Steel</li><li>Stainless Steel</li></ul>  |
|                           |   |  |  |  |
|                           |   |  |  |  |
|                           |   |  |  |  |