



Z Pan Conveyor Belt

/ Collaborate / Create / Convey

FLUENT CONVEYORS, LLC / WWW.FLUENTCONVEYORS.COM



(866)764-2980 / SALES@FLUENTCONVEYORS.COM / ©COPYRIGHT

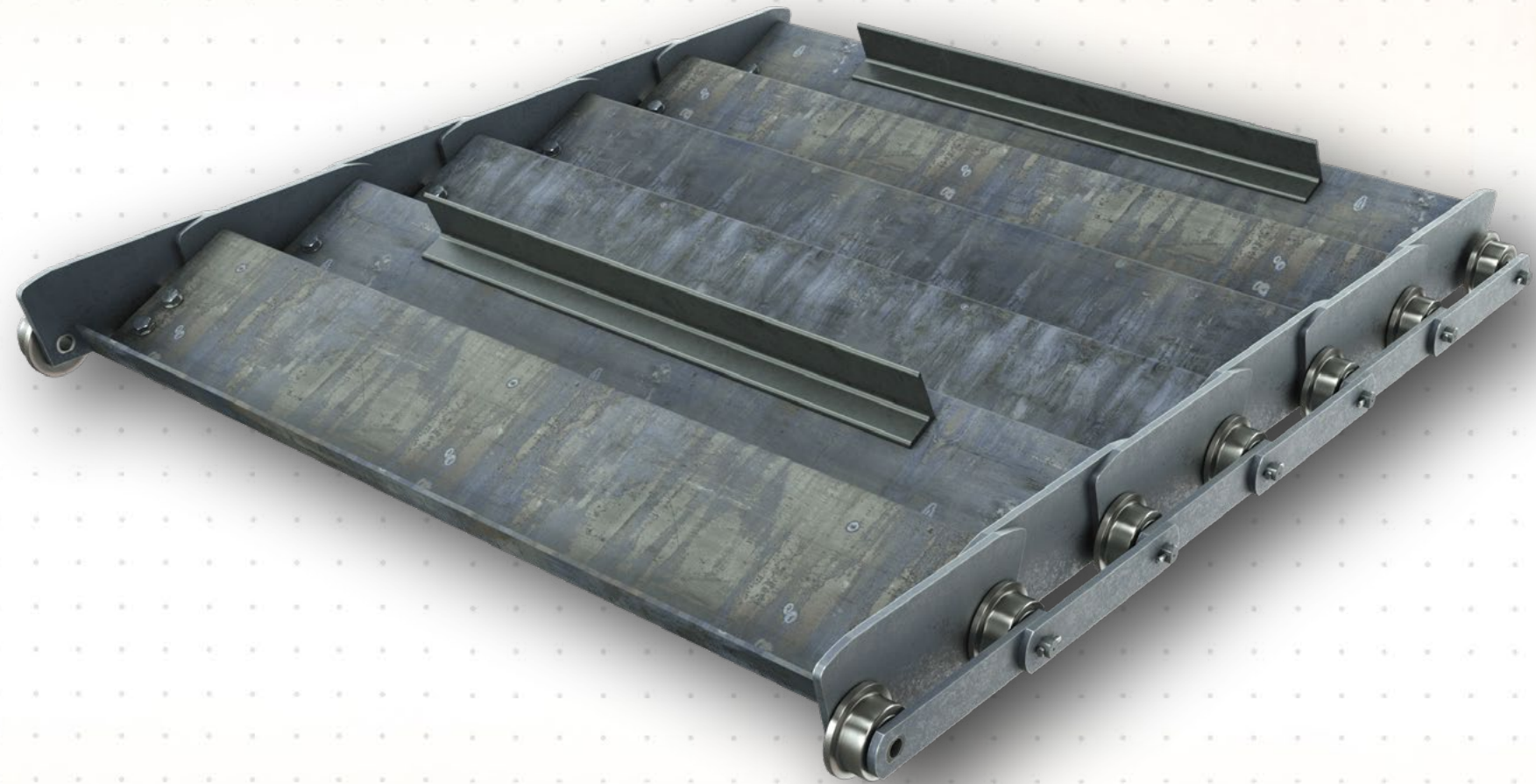


Copyright

The Document and its content is copyright of Fluent Conveyors LLC – ©Fluent Conveyors LLC. All rights reserved. Any redistribution or reproduction of part or all of the contents in any form is prohibited other than the following:

- You may print or download to a local hard disk extracts for your personal and non-commercial use only.
- You may copy the content to individual third parties for their personal use, but only if you acknowledge Fluent Conveyors LLC as the source of the material.

You may not, except with our express written permission, distribute or commercially exploit the content. Nor may transmit it or store it in any form of electronic retrieval system.

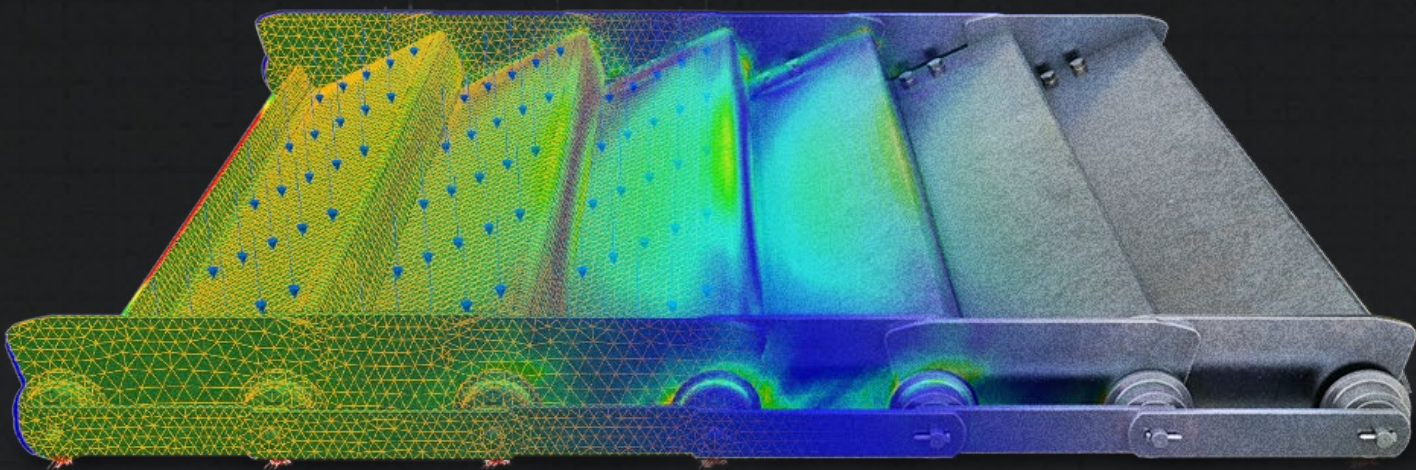


Z Pan Replacement Conveyor Belts

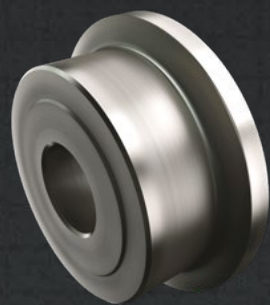
/ Collaborate / Create / Convey

Fluent Z-Pan conveyor belts are our heavy lifters. Created for smooth performance while carrying the brunt of a load. Making sure your operations stay flawless through years of the most intense conditions. Designed to be heavy-duty, high impact, high temperature resistant belting that is ideal to be used in recycling, slag handling, ferrous and non-ferrous, mixed solid waste, mining, foundry, sheared scrap, refuge, glass and many other robust and extreme applications.

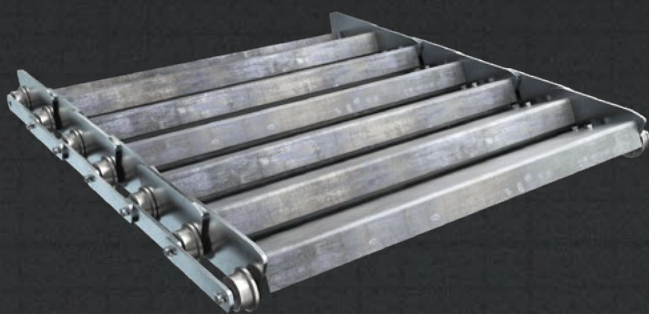
Z-Pan belts come in 6", 9" and 12" pitch options up to 108 wide. 1/4" - 1/2" Thick Precision formed Z style pans, precision die punched wings, single flanged and sintered steel rollers, solid locking pins and add-on options such as cleats, upgraded chain, larger rollers and more. Robust pieces designed with precision to last.



Solutions / Replacement Belt Parts



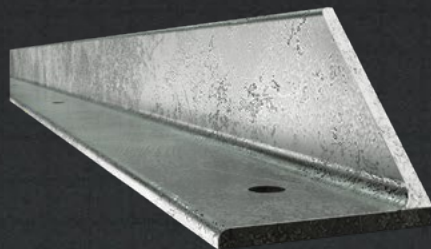
Hardened Sintered Rollers



Assembled Z-Pan Section



C1045 Precision Chain



1/4" or 3/8" Thick Coped Angle Cleats

Key Features

HEAVY DUTY FORMED PANS

SOLID MACHINED BUSHINGS

DOUBLE ROW SIDE BARS

FORMED PLATE ANGLES

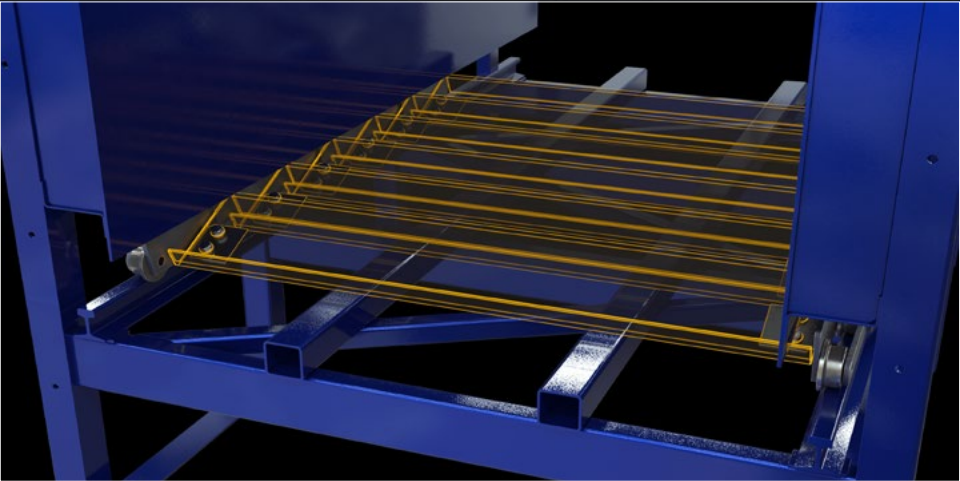
COTTER PINS

HARDENED SINTERED STEEL ROLLERS

EXTENDED INNER SIDE BAR STAGGERED WINGS

HEADED STUB PINS

HEAVY DUTY FORMED IMPACT WEAR PADS



Heavy Duty Formed Pans

Fluent Conveyors offers 1/4", 3/8" up to 1/2" custom formed Z-Pans. Max widths up to 120" wide.



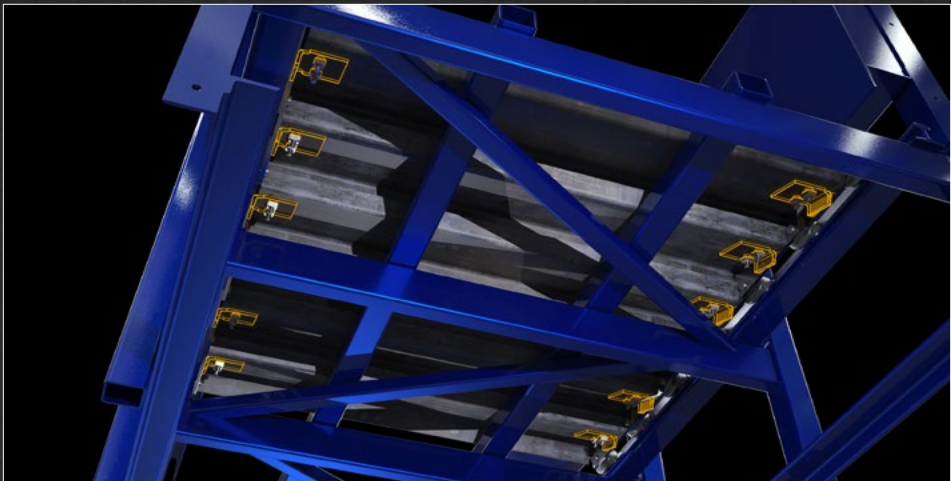
Solid Machined Bushings

0.76" - 1.0" ID x 1.12"-1.38" OD Long 1018 Solid, Machined Bushings. Carburized, hardened RC55-60, press fit into inner side bars.



Double Row Side Bars

2" x 1/4" thick C1045 precision die-punched Side Bars. Additions include 3/8" thick and 1/2" thick.



Formed Plate Angles

Pan mounting 3/8" thick angles to provide simple replacement of sections of belt.

Key Features

HEAVY DUTY FORMED PANS

SOLID MACHINED BUSHINGS

DOUBLE ROW SIDE BARS

FORMED PLATE ANGLES

COTTER PINS

HARDENED SINTERED STEEL ROLLERS

EXTENDED INNER SIDE BAR STAGGERED WINGS

HEADED STUB PINS

HEAVY DUTY FORMED IMPACT WEAR PADS



Cotter Pins

Easy maintenance of chain and to secure the rods to the rollers.



Hardened Sintered Steel Rollers

Flanged and hardened steel rollers in 3", 3-1/2", 4" and 5" diameter options.



Extended Inner Side Bar Staggered

4", 5" and 7" high precision die punched wings, 3/8" thick staggered wing style, wings are part of chain, 3/8" tab punched and welded to chain for attaching pans.



Headed Stub Pins

4142 precision headed machined and heat-treated alloy pins. See options pages for all options. 3/4" diameter up to 1" diameter pins to connect chain.

Key Features

HEAVY DUTY FORMED PANS

SOLID MACHINED BUSHINGS

DOUBLE ROW SIDE BARS

FORMED PLATE ANGLES

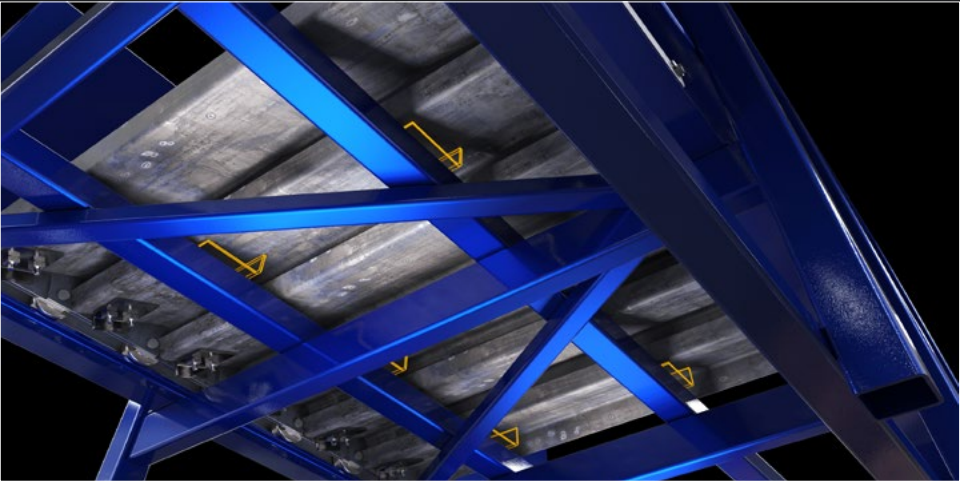
COTTER PINS

HARDENED SINTERED STEEL ROLLERS

EXTENDED INNER SIDE BAR STAGGERED WINGS

HEADED STUB PINS

HEAVY DUTY FORMED IMPACT WEAR PADS



Heavy Duty Formed Impact Wear Pads

Custom number of rows, 1/4", 3/8", 1/2" thick formed impact Wear Pads shoes every other pitch.

The Fluent Conveyors Product Family

/ Collaborate / Create / Convey



Heavy Duty Roller Chain
Conveyors



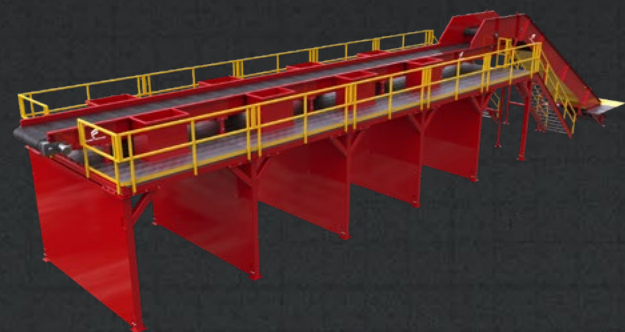
Light Duty Roller Chain
Conveyors



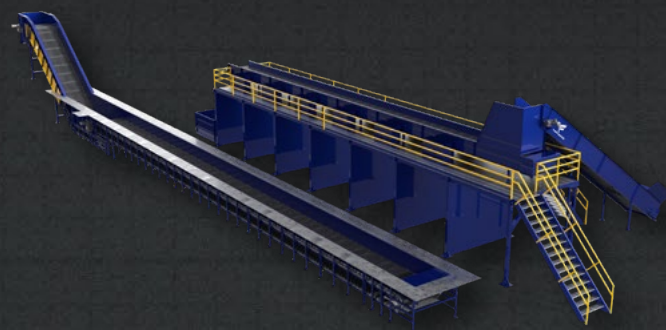
Trough Idler
Conveyors



Slider Bed
Conveyors



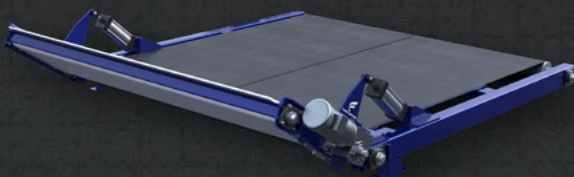
Standard Sort Systems



Custom Sort Systems



Package Handling
Conveyors



Custom Conveyors

Technical Specifications & Belt Modification Options

Please note not all belts can be configured with each option.

Width Options	<ul style="list-style-type: none">• 48"• 60"	<ul style="list-style-type: none">• 72"• 84"	<ul style="list-style-type: none">• 96"	<ul style="list-style-type: none">• 108"• Custom widths from 36" up to 120" width with all Increments within that range.
Cleat Options	<ul style="list-style-type: none">• 2"• 3"	<ul style="list-style-type: none">• 4"• ¼" – ⅜" Flat bar cleats		
Pitch Options	<ul style="list-style-type: none">• 6"	<ul style="list-style-type: none">• 9"		<ul style="list-style-type: none">• 12".
Z-Pan Thickness	<ul style="list-style-type: none">• ¼"• ⅜"	<ul style="list-style-type: none">• ½"		
Side Wing Height	<ul style="list-style-type: none">• 3"• 4"	<ul style="list-style-type: none">• 5"• 7"		
Chain Pull	<ul style="list-style-type: none">• 6,000#• 9,000#	<ul style="list-style-type: none">• 13,000#• 14,000#		<ul style="list-style-type: none">• 25,000#
Side Bar Thickness	<ul style="list-style-type: none">• ¼"• ⅜"	<ul style="list-style-type: none">• ½"		
Hardened Bushing Sizes	<ul style="list-style-type: none">• 0.76"-1.0" ID x 1.12"-1.38" OD			
Pin Diameter Options	<ul style="list-style-type: none">• ¾"	<ul style="list-style-type: none">• 1"		
Roller Diameter Options	<ul style="list-style-type: none">• 2-⅛"• 3"	<ul style="list-style-type: none">• 3-½"• 4"		<ul style="list-style-type: none">• 5"
Custom Modifications	Flat Bar cleats, impact pads.			

Replacement Z Pan Roller Chain Conveyor Belt

Step A: Belt Specs (see page 12)

1	Pan Thickness	inches	mm
2	Belt Width (Inside Sealing Wings)	inches	mm
3	Belt Width (Overall Width)	inches	mm
4	Roller Spacing	inches	mm
5	Belt Length	inches	mm

Step C: Side Bar Specs (see page 14)

10	Chain Pitch	inches	mm
11	Side Bar Width	inches	mm
12	Side Bar Thickness	inches	mm
13	Single Or Double Row	inches	mm

Step B: Roller Specs (see page 13)

6	Roller Diameter	inches	mm
7	Flange Roller Diameter (If Applicable)	inches	mm
8	Roller Width	inches	mm
9	Overall Roller Width (Includes Flanged Roller)	inches	mm

Step D: Sealing Wings Specs (see page 15)

14	Sealing Wing Height	inches	mm
15	Sealing Wing Thickness	inches	mm

Step E: Cleat Specs (see page 16)

16	Height Of Cleat	inches	mm
17	Thickness Of Cleat	inches	mm
18	Total Length	inches	mm
19	Offset From Sealing Wing	inches	mm

Step F: Belt Underside Wear Pads Specs (see page 17)

20	Wear Pad Thickness	inches	mm
21	Wear Pad Quantity (Two Per Pitch Shown)	inches	mm
22	Wear Pad Spacing	inches	mm
23	Wear Pad Location	inches	mm
24	Wear Pad Size	inches	mm

Z PAN COMPONENT OVERVIEW

STEP E

CLEAT SPECS NEEDED (IF APPLICABLE):

- 16: HEIGHT OF CLEAT (ANGLE IRON SHOWN)
- 17: THICKNESS OF CLEAT
- 18: TOTAL LENGTH
- 19: OFFSET FROM SEALING WING

STEP D

SEALING WINGS SPECS NEEDED (IF APPLICABLE):

- 14: SEALING WING HEIGHT
- 15: SEALING WING THICKNESS

STEP A

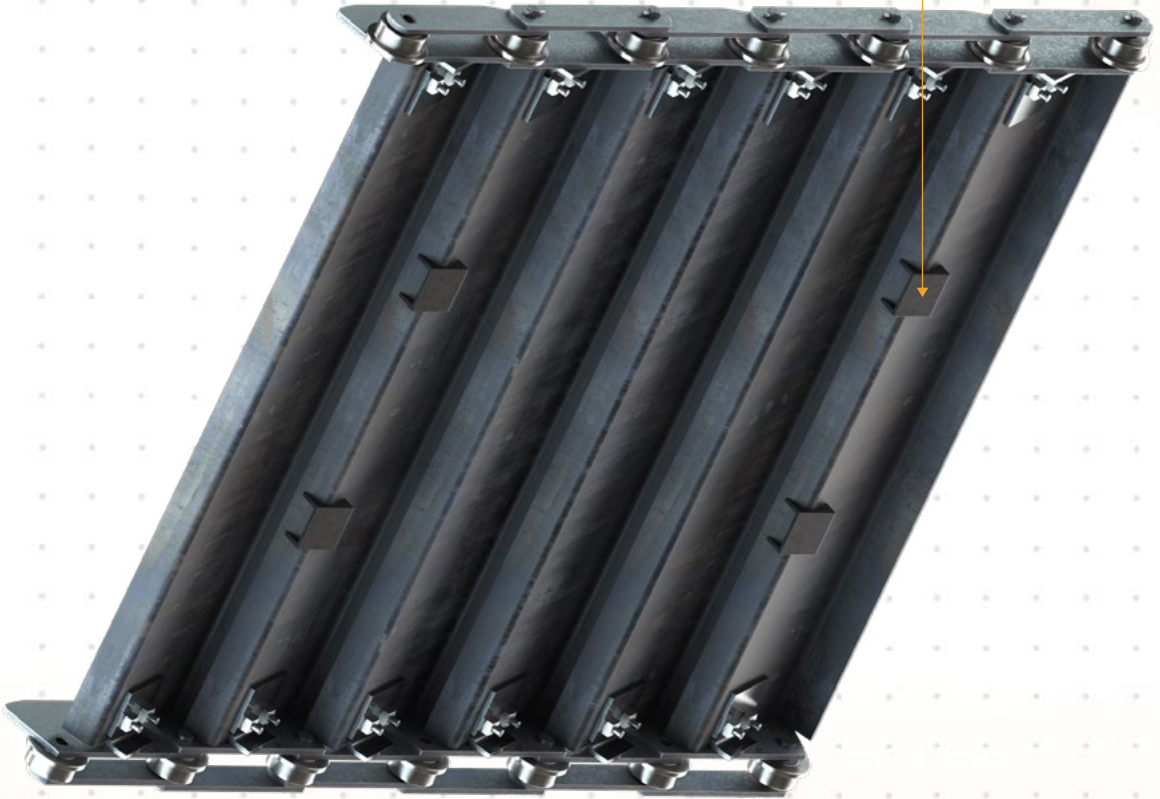
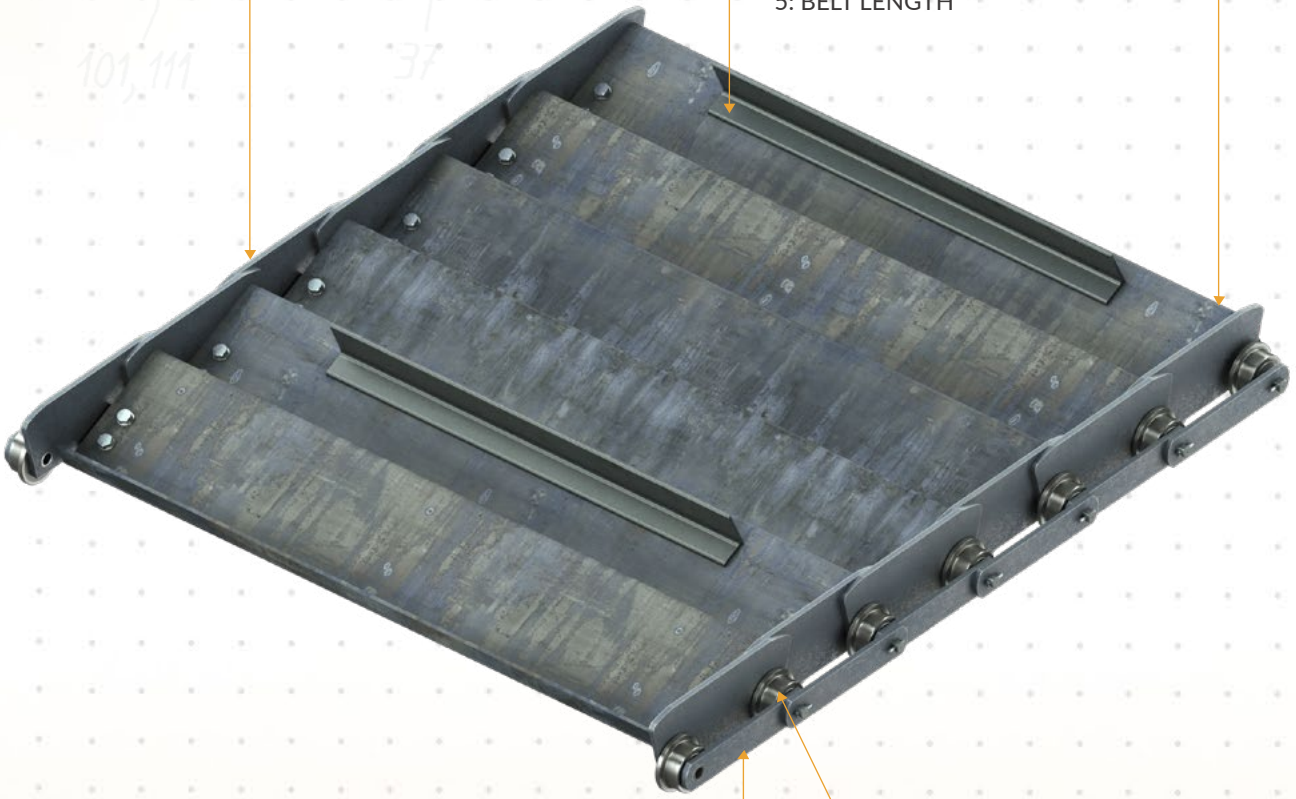
BELT SPECIFICATIONS NEEDED:

- 1: PAN THICKNESS
- 2: BELT WIDTH (INSIDE SEALING WINGS)
- 3: BELT WIDTH (OVERALL WIDTH)
- 4: ROLLER SPACING
- 5: BELT LENGTH

STEP F

BELT UNDERSIDE WEAR PAD SPECS NEEDED:

- 20: WEAR PAD THICKNESS
- 21: WEAR PAD QUANTITY (TWO PER PITCH SHOWN)
- 22: WEAR PAD SPACING
- 23: WEAR PAD LOCATION
- 24: WEAR PAD SIZE



STEP C

SIDE BARS SPECS NEEDED:

- 10: CHAIN PITCH
- 11: SIDE BAR WIDTH
- 12: SIDE BAR THICKNESS
- 13: SINGLE OR DOUBLE ROW

STEP B

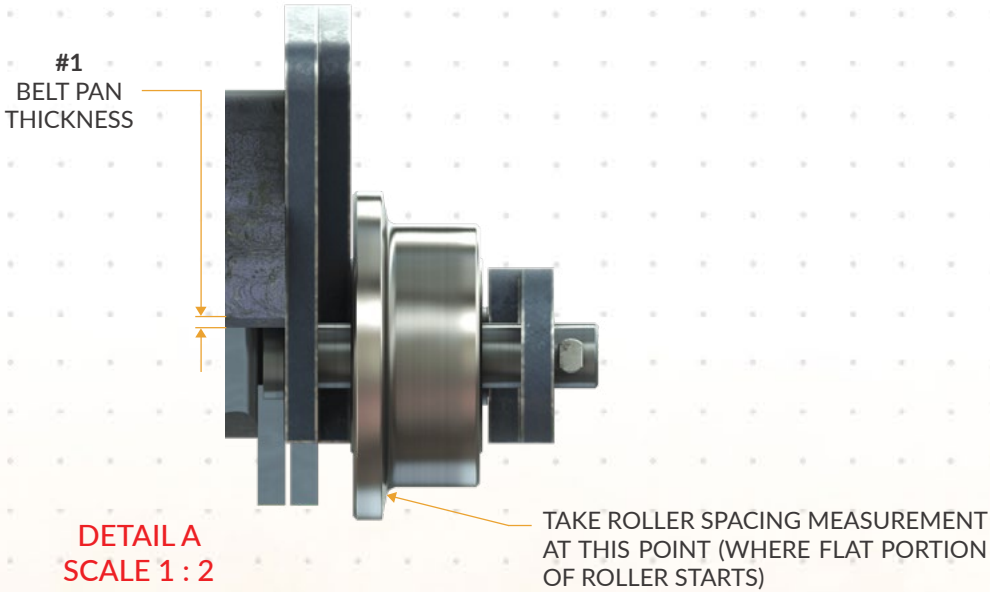
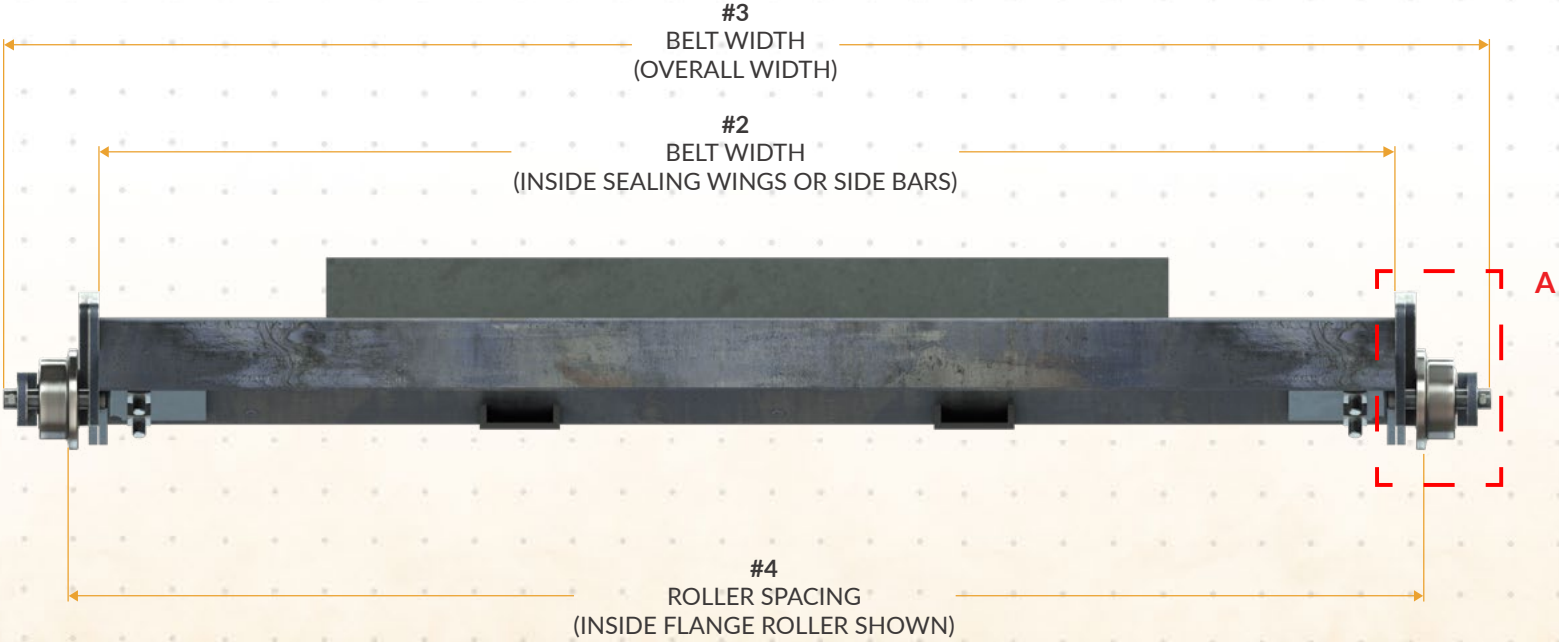
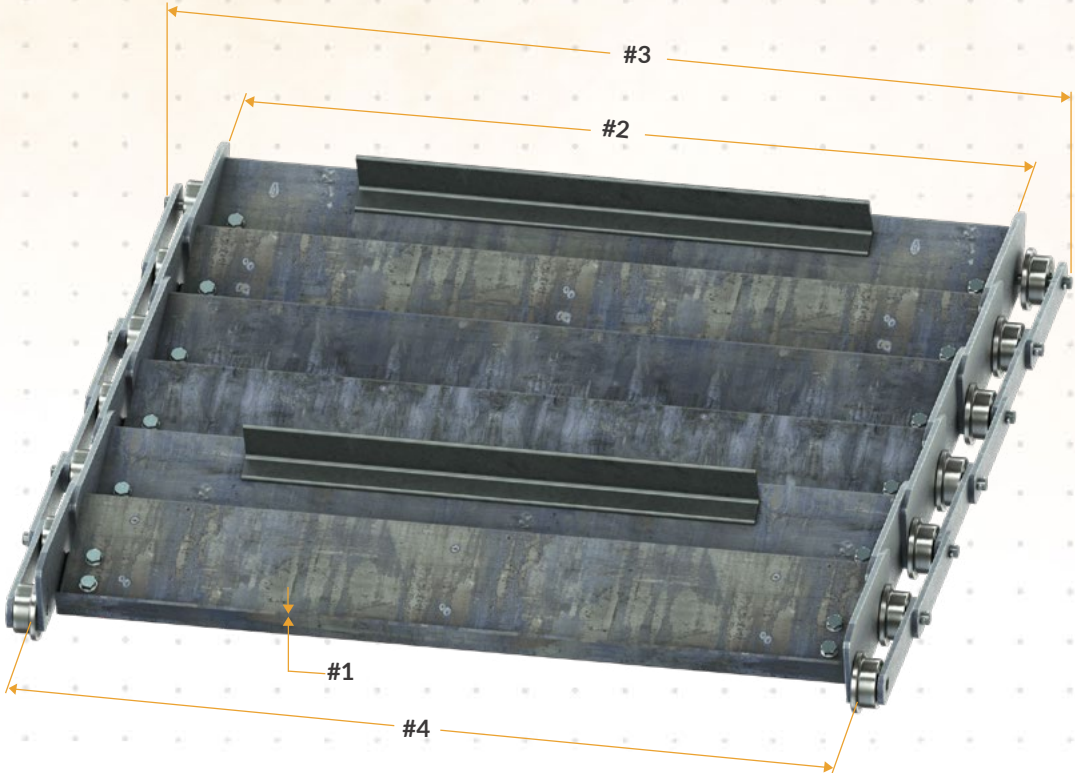
ROLLER SPECS NEEDED:

- 6: ROLLER DIAMETER
- 7: FLANGED ROLLER DIAMETER (IF APPLICABLE)
- 8: ROLLER WIDTH
- 9: OVERALL ROLLER WIDTH (INCLUDES FLANGED ROLLER)

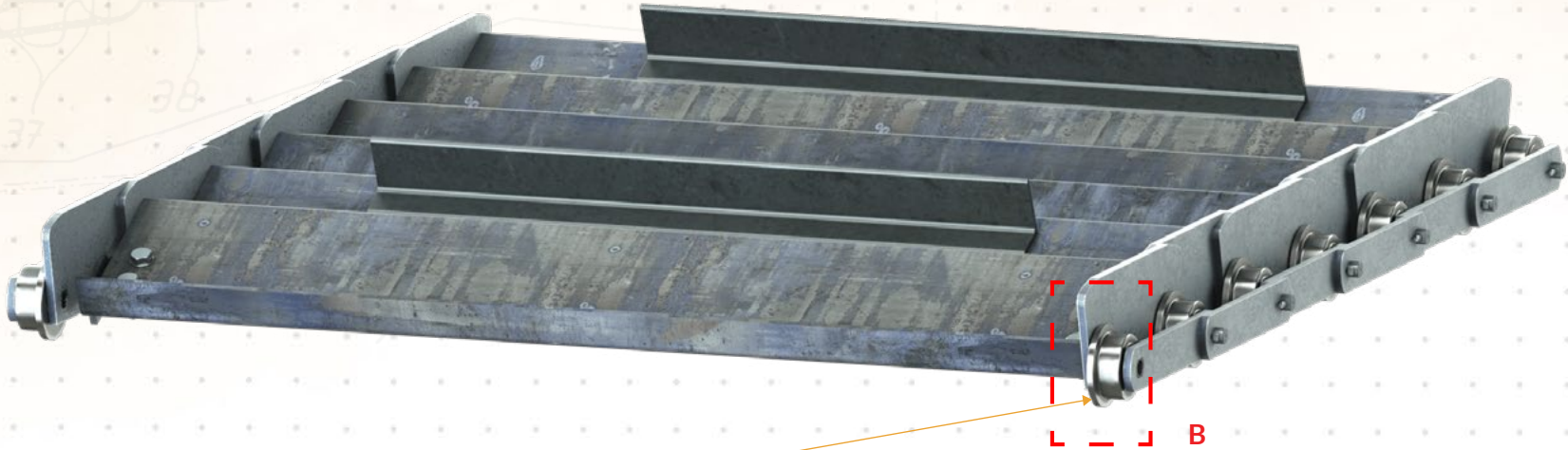
STEP A: BELT SPECS

BELT SPECS NEEDED:

- 1: PAN THICKNESS
- 2: BELT WIDTH (INSIDE SEALING WINGS)
- 3: BELT WIDTH (OVERALL WIDTH)
- 4: ROLLER SPACING
- 5: BELT LENGTH



STEP B: ROLLER SPECS

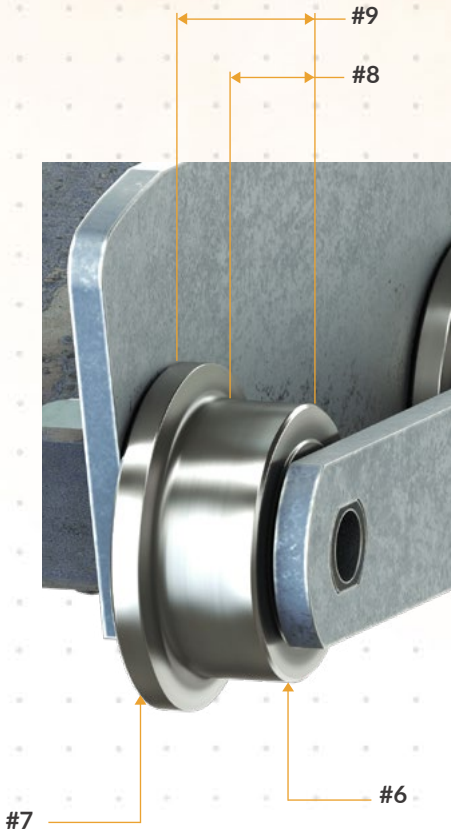


ROLLER SPECS NEEDED:

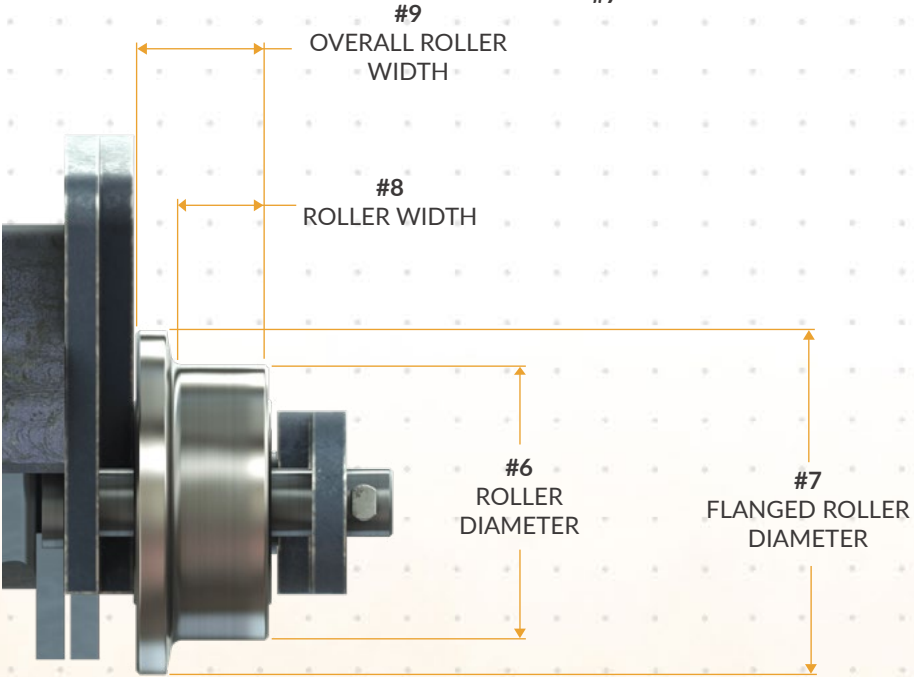
- 6: ROLLER DIAMETER
- 7: FLANGED ROLLER DIAMETER (IF APPLICABLE)
- 8: ROLLER WIDTH
- 9: OVERALL ROLLER WIDTH (INCLUDES FLANGED ROLLER)



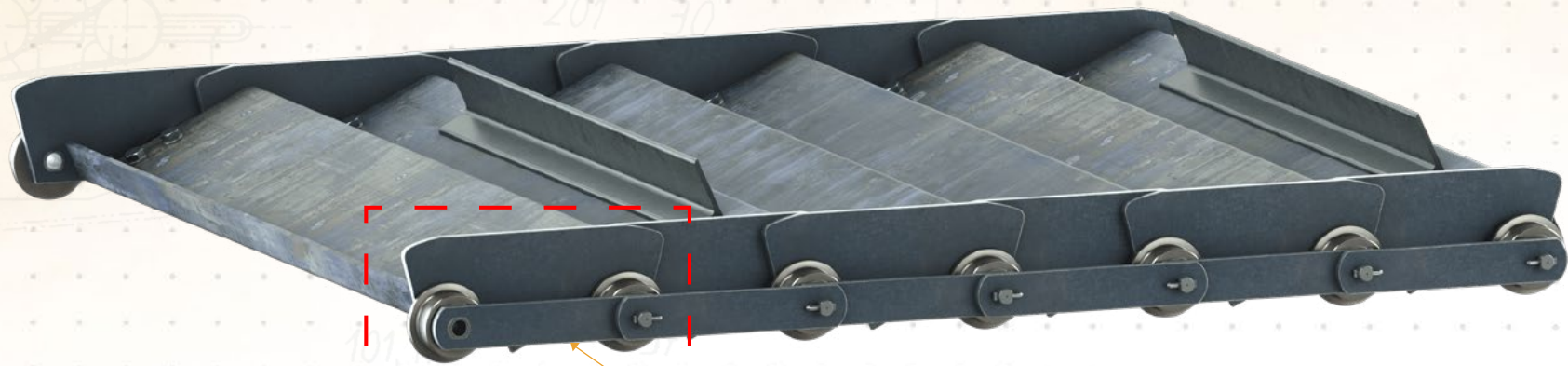
DETAIL B
SCALE 1 : 2



DETAIL C
SCALE 1 : 2



STEP C: SIDE BAR SPECS



SIDE BARS SPECS NEEDED:

- 10: CHAIN PITCH
- 11: SIDE BAR WIDTH
- 12: SIDE BAR THICKNESS
- 13: SINGLE OR DOUBLE CHAIN ROW

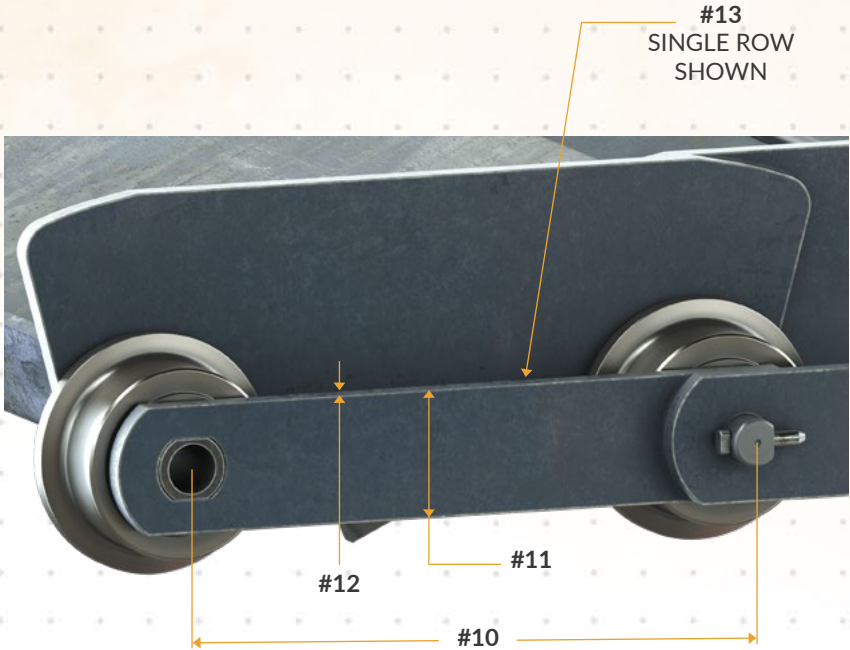


#11
SIDE BAR
WIDTH

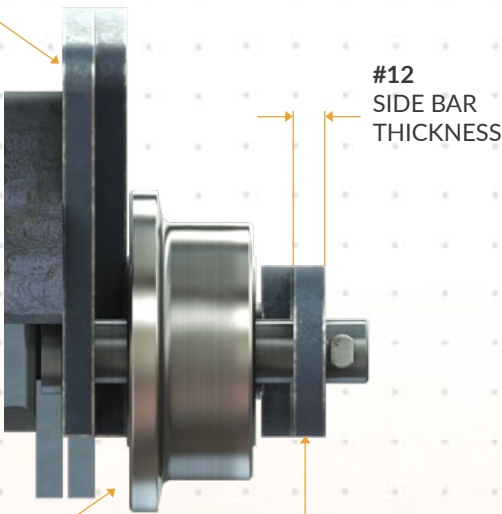


#10
CHAIN PITCH

DETAIL D
SCALE 1 : 4



*SEALING WINGS
ARE NOT COUNTED AS
DOUBLE CHAIN ROW



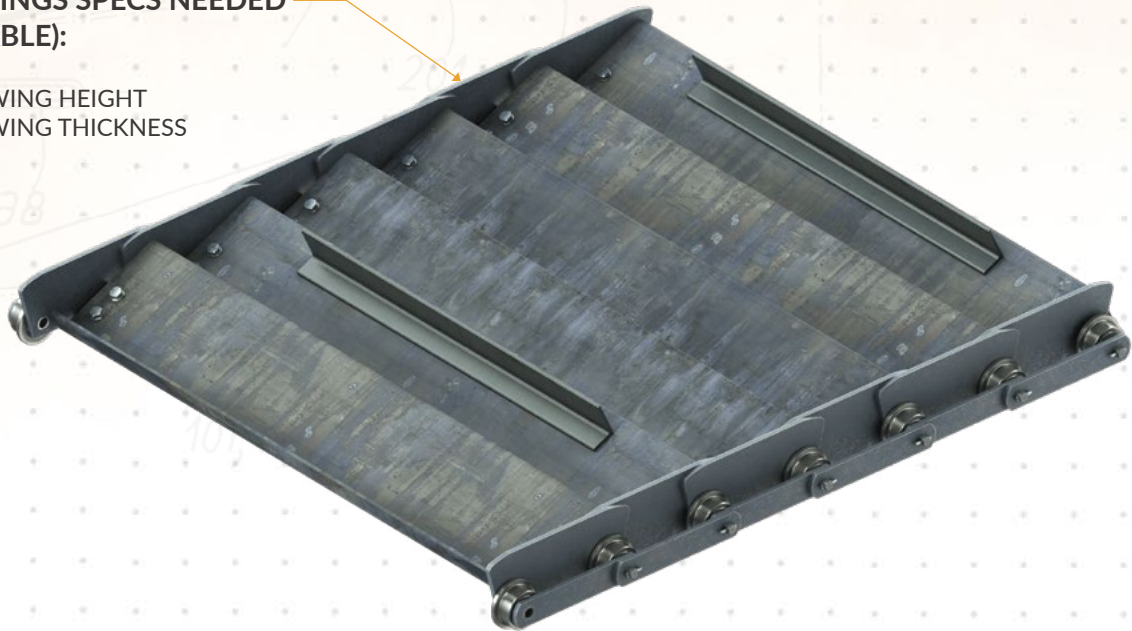
*DOUBLE CHAIN ROW WOULD
HAVE SECOND SET ON INSIDE
OF ROLLERS (NOT SHOWN)

DETAIL E
SCALE 1 : 2

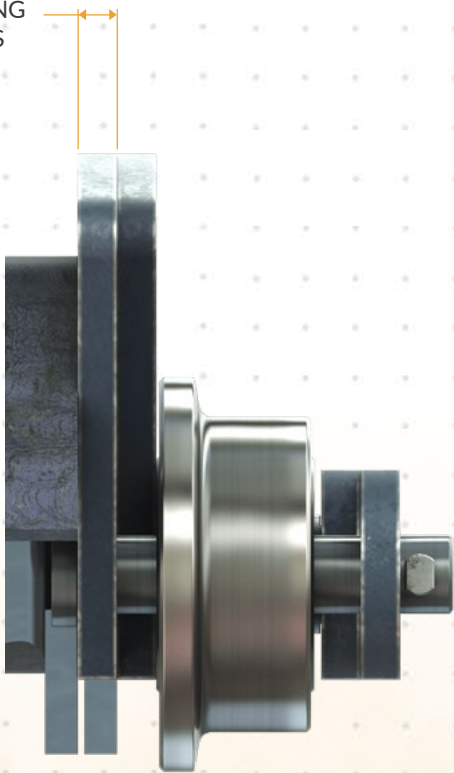
STEP D: SEALING WING SPECS

SEALING WINGS SPECS NEEDED
(IF APPLICABLE):

- 14: SEALING WING HEIGHT
- 15: SEALING WING THICKNESS



#15
SEALING WING
THICKNESS



DETAIL F
SCALE 1 : 2

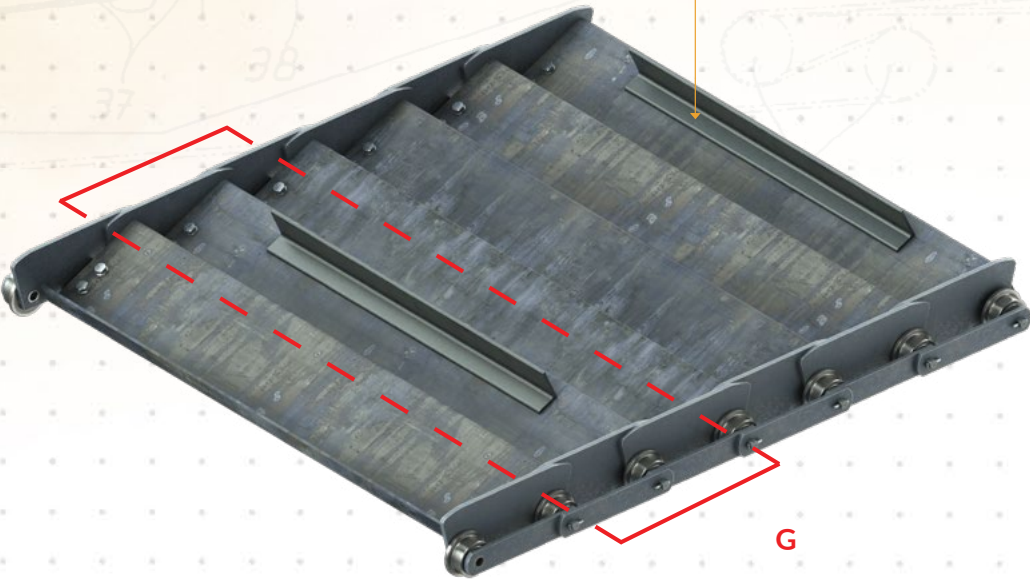
#14
SEALING WING
HEIGHT (MEASURED FROM
ROLLER CL)



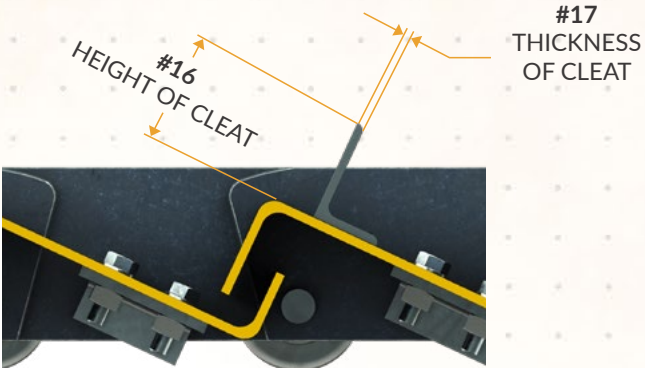
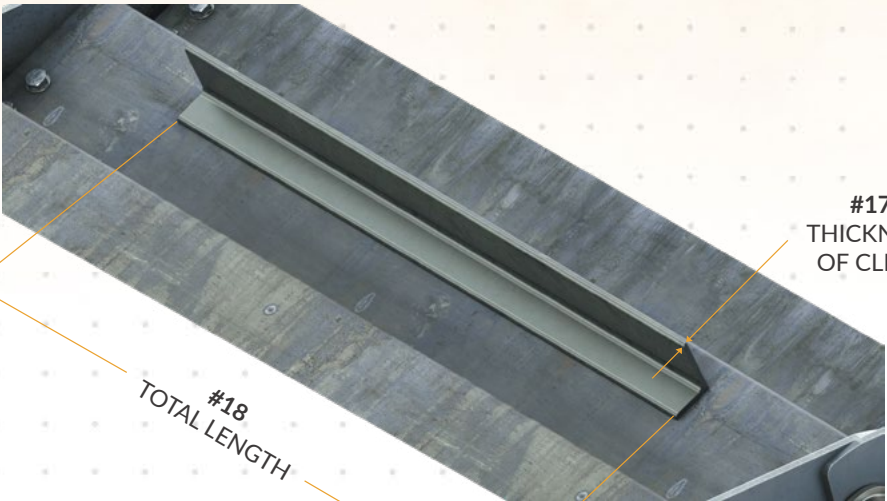
STEP E: CLEAT SPECS

CLEAT SPECS NEEDED (IF APPLICABLE):

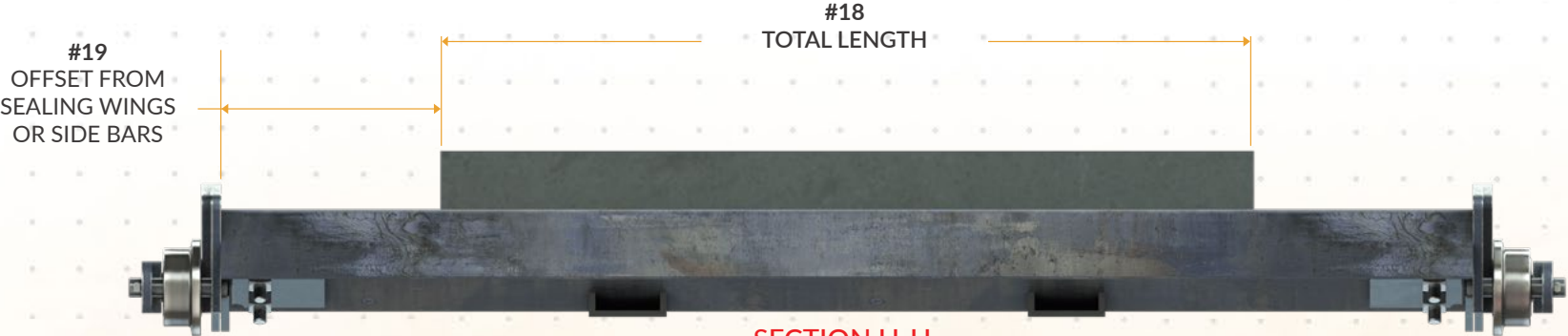
- 16: HEIGHT OF CLEAT (ANGLE IRON SHOWN)
- 17: THICKNESS OF CLEAT
- 18: TOTAL LENGTH
- 19: OFFSET FROM SEALING WING



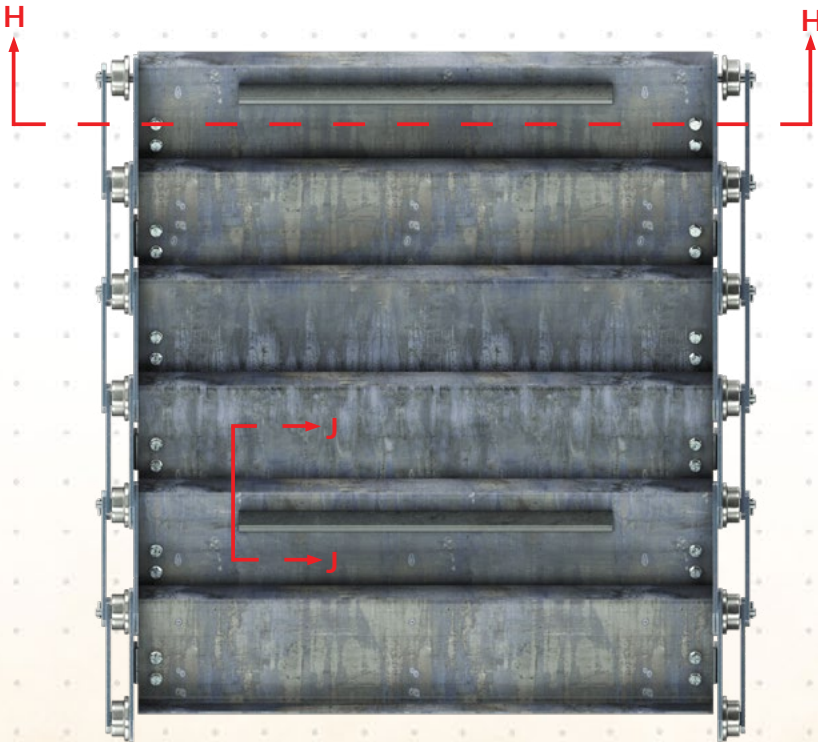
DETAIL G
SCALE 1 : 8



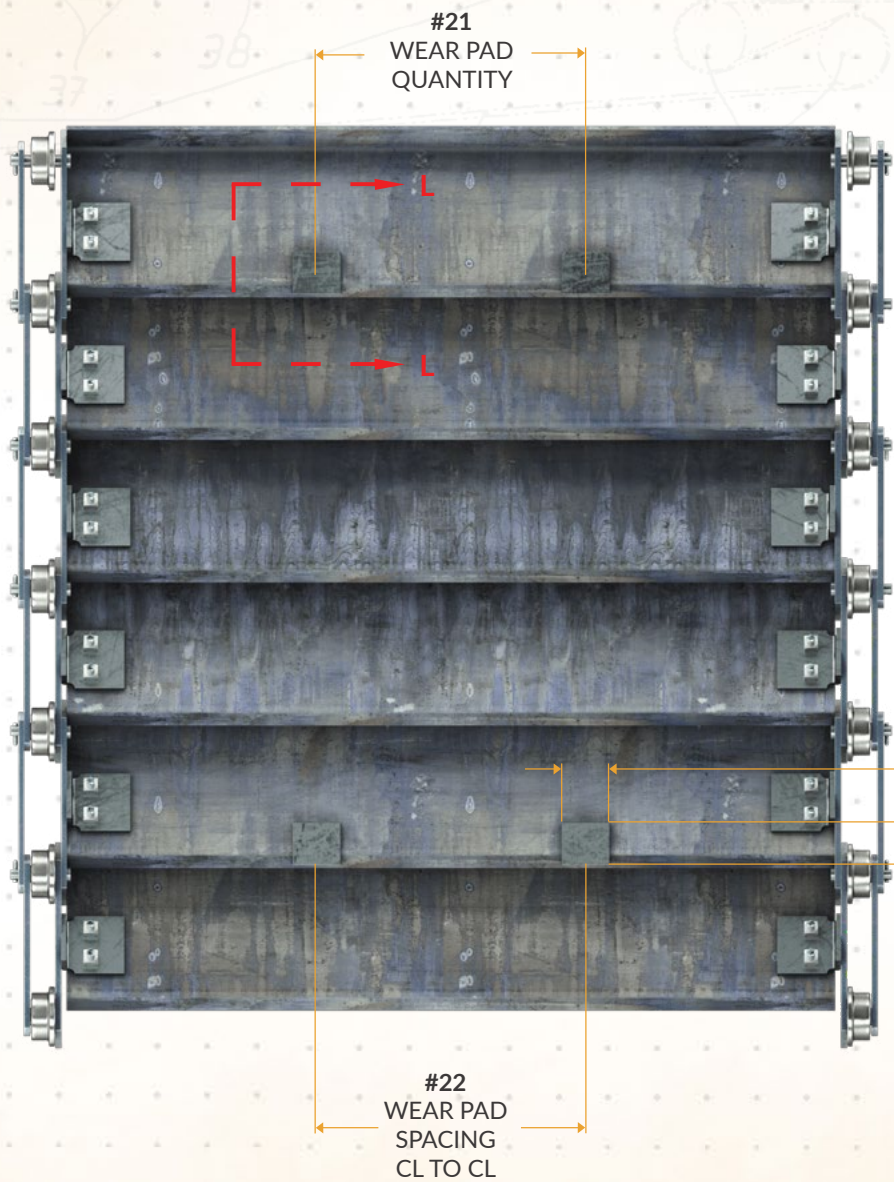
SECTION J-J
SCALE 1 : 5



SECTION H-H
SCALE 1 : 8



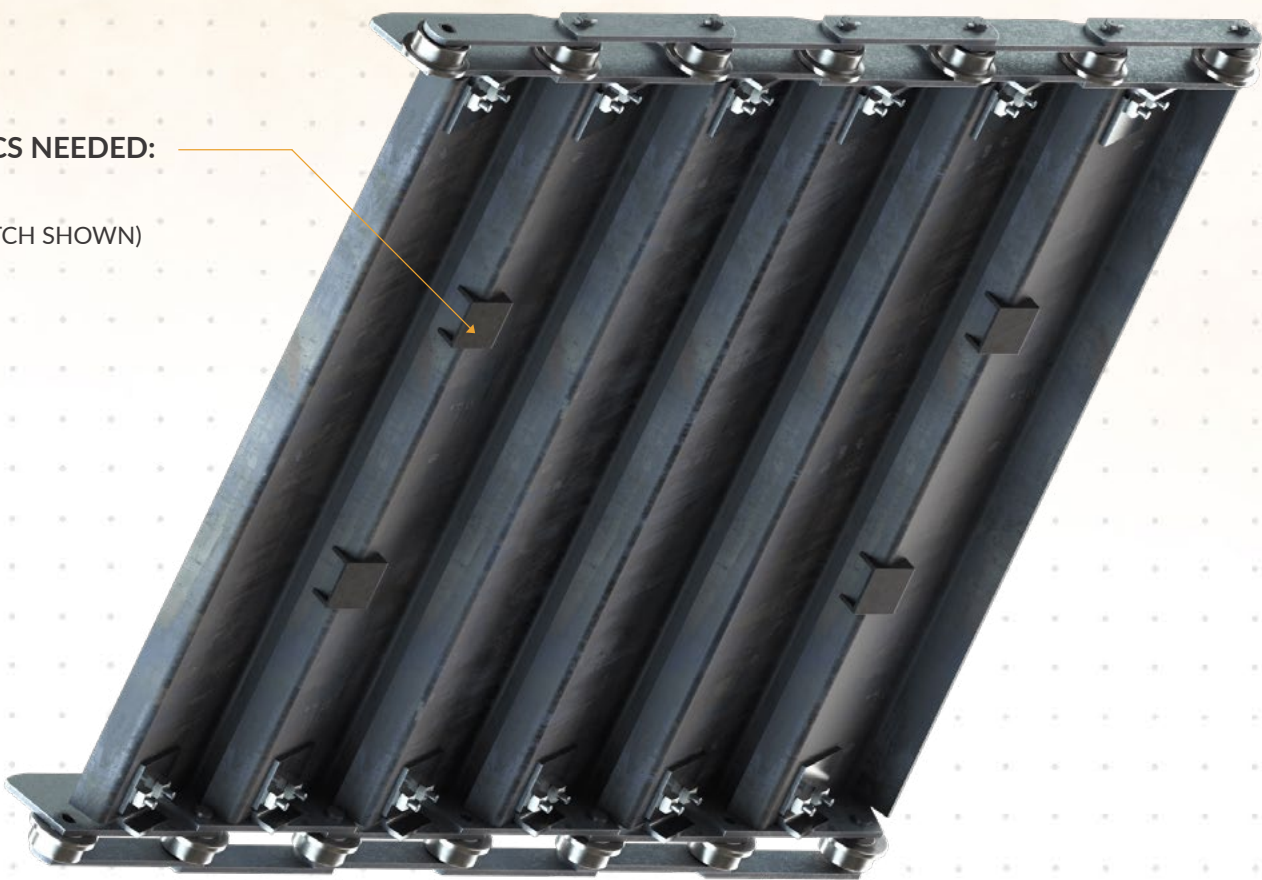
STEP F: BELT UNDERSIDE WEAR PAD SPECS



SECTION L-L
SCALE 1 : 3

BELT UNDERSIDE SUPPORT SPECS NEEDED:

- 20: WEAR PAD THICKNESS
- 21: WEAR PAD QUANTITY (TWO PER PITCH SHOWN)
- 22: WEAR PAD SPACING
- 23: WEAR PAD LOCATION
- 24: WEAR PAD SIZE LENGTH & WIDTH



#23
WEAR PAD LOCATION
(FROM ROLLER CL TO BOTTOM
OF WEAR PAD)

#21
WEAR PAD
THICKNESS

